



THE CITY AND COUNTY OF BROOMFIELD SURVEY SHEET  
GPS CONTROL POINTS

April 2010



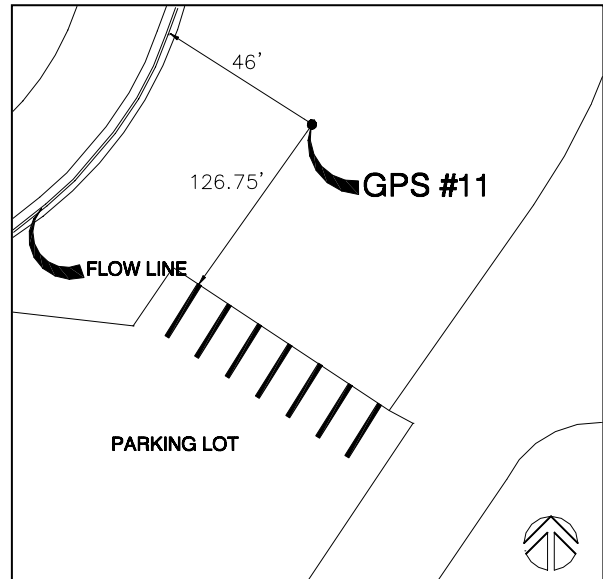
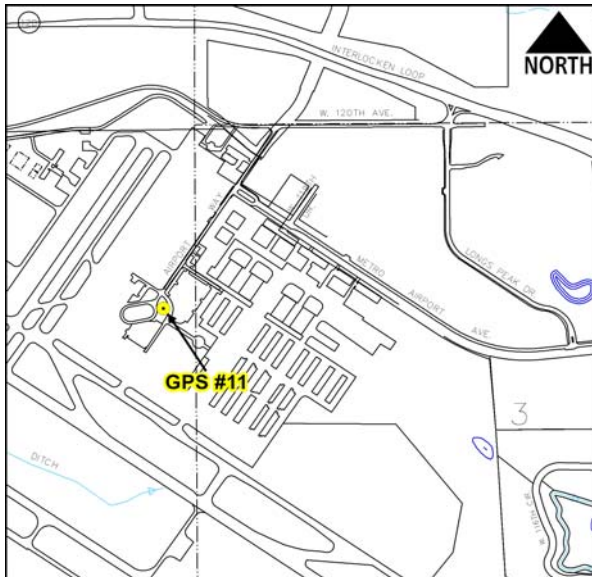
Designation – GPS No. 11  
State/County – CO/Boulder  
USGS Quad – Lafayette (1994)

GPS Monument

Horizontal Datum - NAD 83/92 - HARN (High Accuracy Reference Network) Based  
(SPCS) State Plane Coordinate System Colorado North Zone 0501 US Survey Feet  
Ellipsoid GRS 80 – (Geodetic Reference System of 1980)  
Vertical Datum - NAVD 88 – (North American Vertical Datum of 1988)

★ NGS Unpublished *Broomfield Surveyed Point*

Position	Latitude 39°54'35.67554" N	Longitude 105°06'37.30443" W
NSPCS	Northing 1210269.618	Easting 3109302.237
Height (Orthometric)	1706.950 Meters	5600.219 (US) Feet (Adjusted)
Scale Factor	0.999974436	



Contact—The City and County of Broomfield, GIS Division,  
One DesCombes Dr., Broomfield, CO 80020, 303-464-5834.

The station is located in the Rocky Mountain Metropolitan Airport, in the Northeast 1/4 of Section 4, T2S, R69W, of the 6<sup>th</sup> Principal Meridian.

To reach the station from the intersection of Highway 121 and METRO Airport Ave., travel West to intersection of METRO Airport Ave. and Airport Way, then travel South to a location east of tower, the mark is 46' East of Airport Way ROW, 126.75' North of parking lot flow line. The mark is a GPS cap in the ground.

GPS#11.DOC

