



THE CITY AND COUNTY OF BROOMFIELD SURVEY SHEET
GPS CONTROL POINTS

May 2006



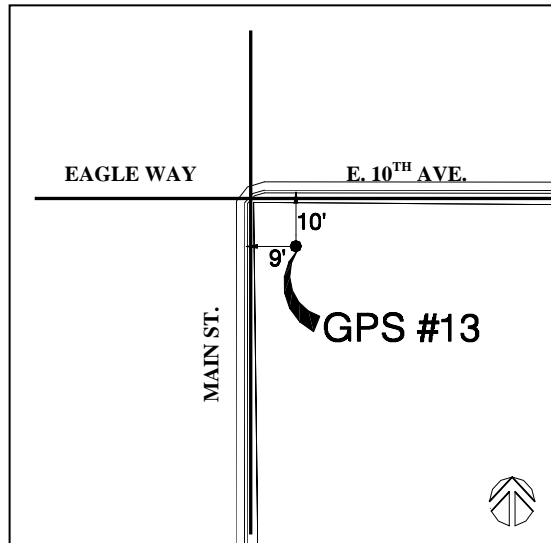
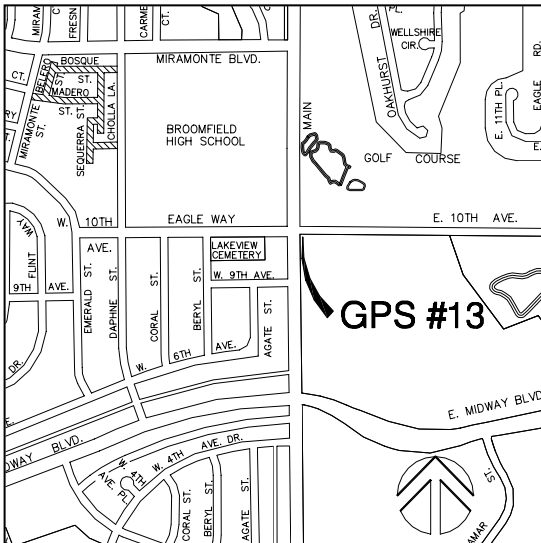
Designation – GPS No. 13
State/County – CO/Broomfield
USGS Quad – Lafayette (1994)

GPS Monument

Horizontal Datum - NAD 83/92 - HARN (High Accuracy Reference Network) Based
(SPCS) State Plane Coordinate System Colorado North Zone 0501 US Survey Feet
Ellipsoid GRS 80 – (Geodetic Reference System of 1980)
Vertical Datum - NAVD 88 – (North American Vertical Datum of 1988)

★ NGS Unpublished *Broomfield Surveyed Point*

| | | |
|-----------------------------|--------------------------------------|--|
| Position | Latitude 39°55'43.39185" N | Longitude 105°04'18.11807" W |
| NSPCS | Northing 1217171.535 | Easting 3120114.879 |
| Height (Orthometric) | 1637.509 Meters | 5372.393 (US) Feet (Adjusted) |
| Scale Factor | 0.999972550 | |



Contact—The City and County of Broomfield, GIS Division,
One DesCombes Dr., Broomfield, CO 80020, 303-464-5834.

The station is located in The City and County of Broomfield, in the Northwest 1/4 of Section 36, T1S, R69W, of the 6th Principal Meridian.

To reach the station from the intersection of Main St. and Eagle Way/E. 10th AVE. in Broomfield, travel to the Southeast corner of the intersection. The mark is 10' South of the E. 10th AVE. flow line and 9' East of the Main Street flow line. The mark is a 2" round cap set in concrete.

