



THE CITY AND COUNTY OF BROOMFIELD SURVEY SHEET
GPS CONTROL POINTS

May 2006



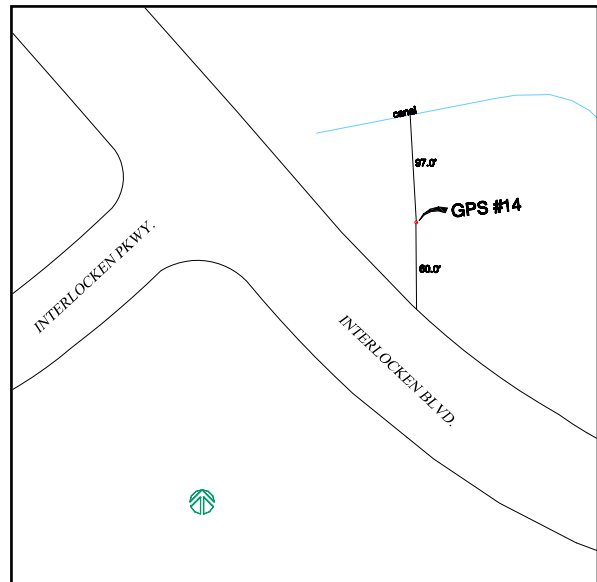
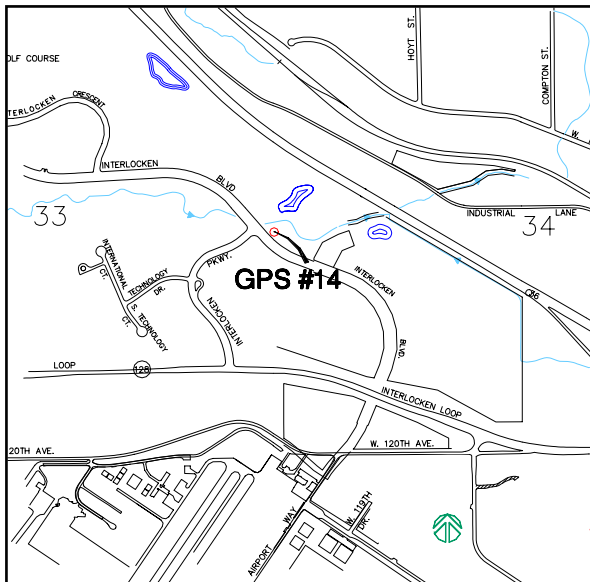
Designation – GPS No. 14
State/County – CO/Broomfield
USGS Quad – Lafayette (1994)

GPS Monument

Horizontal Datum - NAD 83/92 - HARN (High Accuracy Reference Network) Based
(SPCS) State Plane Coordinate System Colorado North Zone 0501 US Survey Feet
Ellipsoid GRS 80 – (Geodetic Reference System of 1980)
Vertical Datum - NAVD 88 – (North American Vertical Datum of 1988)

★ NGS Unpublished *Broomfield Surveyed Point*

Position	Latitude 39°55'14.51381"N	Longitude 105°06'33.76830"W
NSPCS	Northing 1214200.70	Easting 3109560.47
Height (Orthometric)	1660.32 Meters	5447.22(US) Feet (Adjusted)
Scale Factor	0.999973341	



Contact—The City and County of Broomfield, GIS Division,
One DesCombes Dr., Broomfield, CO 80020, 303-464-5834.
The station is located in The City and County of Broomfield, at the
East quarter corner of Section 33, T1S, R69W, of the 6th Principal
Meridian.

To reach the station from the intersection of State Highway 121 and
Interlocken Loop (SH 128) in Broomfield, travel to the Southwest
corner of the intersection. Travel west on Interlocken Loop (SH
128) to Interlocken Blvd. Then travel Northwest on Interlocken
Blvd. to East Interlocken Park. The mark is 60.0 feet northeast of
of Interlocken Blvd, 48.1 feet west of center of a large manhole, and 97.0 feet south of a concrete canal. The mark is a 3
¼ inch brass cap set in concrete.

