

THE CITY AND COUNTY OF BROOMFIELD SURVEY SHEET
GPS CONTROL POINTS

May 2006

Designation – Jeffco AZ MK
State/County – CO/Broomfield
USGS Quad – Lafayette (1994)

NGS
SURVEY
CAP

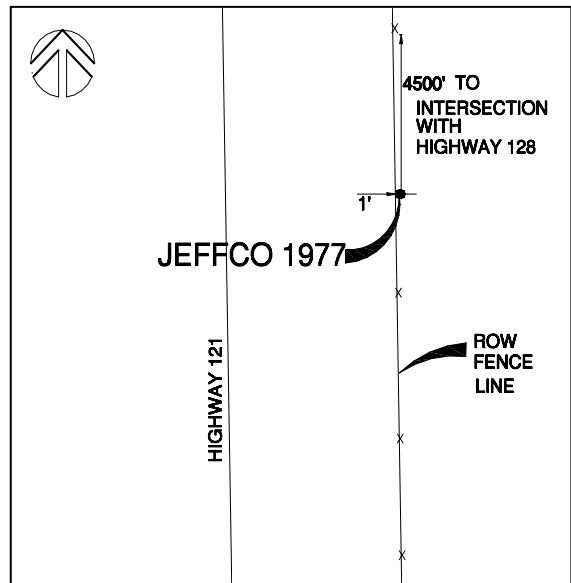
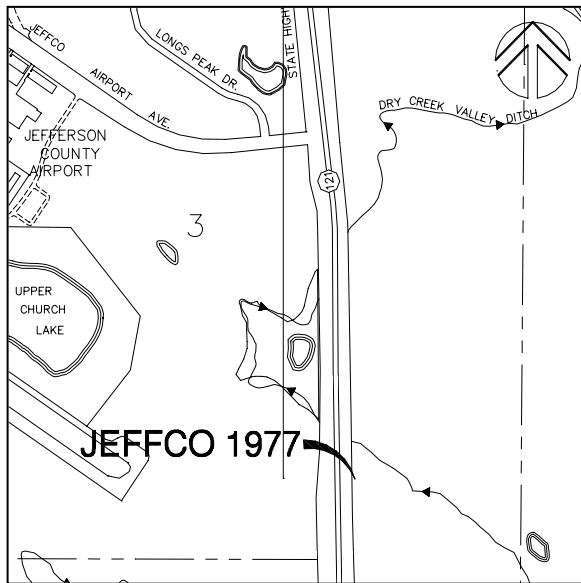
Horizontal Datum - NAD 83/92 - HARN (High Accuracy Reference Network) Based
(SPCS) State Plane Coordinate System Colorado North Zone 0501 US Survey Feet

Ellipsoid GRS 80 – (Geodetic Reference System of 1980)

Vertical Datum - NAVD 88 – (North American Vertical Datum of 1988)

★ NGS Published KK1433 <http://www.ngs.noaa.gov/>

Position	Latitude 39° 54' 06.44949" N	Longitude 105° 05' 44.13413" W
NSPCS	Northing 1207330.920	Easting 3113458.885
Height (Orthometric)	1680.260 Meters	5512.65 (US) Feet (Adjusted)
Scale Factor	0.99997528	



Contact—The City and County of Broomfield, GIS Division,
One DesCombes Dr., Broomfield, CO 80020, 303-464-5834.

The station is located in The City and County of Broomfield, 1 mile southeast of the Jeffco Airport and 0.9 miles south of the junction of State Highway 121 and U.S. 36, in the southeast ¼ of section 3, T2S, R69W, at State Highway 121 milepost 24.95. To reach the station from the intersection of State Highway 121 travel 1.05 miles to the mark on the left on the North side of the hill and is 1' East of fence ROW.

The mark is a 3-inch brass cap stamped –JEFFCO 1977—and is in a concrete base.

