



**THE CITY AND COUNTY OF BROOMFIELD SURVEY SHEET  
GPS CONTROL POINTS**

May 2006

**Designation – Jeffco Reset  
State/County – CO/Broomfield  
USGS Quad – Lafayette (1994)**

**NGS  
SURVEY  
CAP**

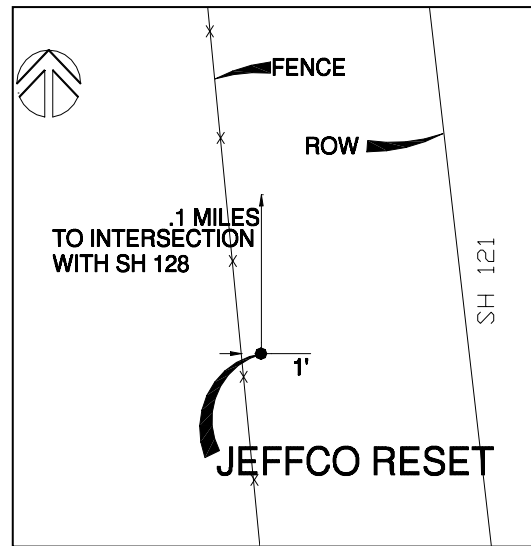
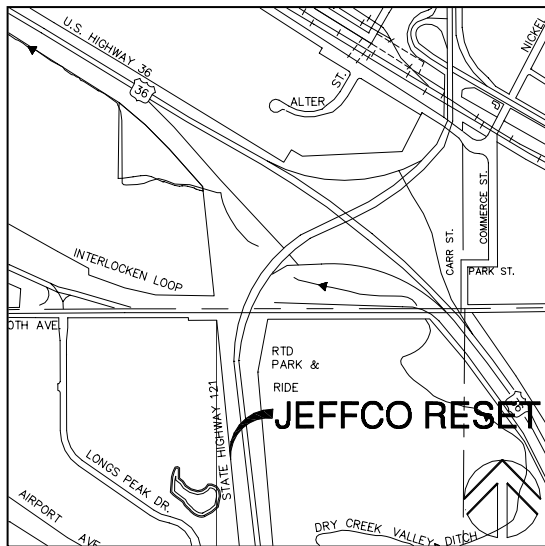
**Horizontal Datum - NAD 83/92 - HARN (High Accuracy Reference Network) Based  
(SPCS) State Plane Coordinate System Colorado North Zone 0501 US Survey Feet**

**Ellipsoid GRS 80 – (Geodetic Reference System of 1980)**

**Vertical Datum - NAVD 88 – (North American Vertical Datum of 1988)**

★ **NGS Published** *KK1432* <http://www.ngs.noaa.gov/>

<b>Position</b>	<b>Latitude</b> 39° 54' 43.05405" N	<b>Longitude</b> 105° 05' 50.35674" W
<b>NSPCS</b>	<b>Northing</b> 1211032.558	<b>Easting</b> 3112957.127
<b>Height (Orthometric)</b>	<b>1694.016 Meters</b>	<b>5557.78 (US) Feet (Adjusted)</b>
<b>Scale Factor</b>	<b>0.99997423</b>	



Contact—The City and County of Broomfield, GIS Division,  
One DesCombes Dr., Broomfield, CO 80020, 303-464-5834.  
The station is located in The City and County of Broomfield, in  
the Northeast 1/4 of Section 3, T2S, R69W, of the 6th Principal  
Meridian.

To reach the station from the intersection of Highway 128 and  
Highway 121 in Broomfield, travel South on Highway 121, 0.1  
miles. The mark is 3-inch brass cap in a concrete base, stamped  
–JEFFCO 1977 1980–. It is located 1' East of the westerly  
Highway 121 ROW and referenced by a witness post in the  
vicinity.

