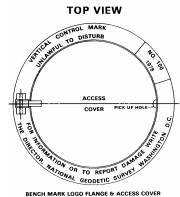




THE CITY AND COUNTY OF BROOMFIELD SURVEY SHEET  
GPS CONTROL POINTS

May 2006

Designation – NGS B413  
State/County – CO/Broomfield  
USGS Quad – Lafayette (1994)



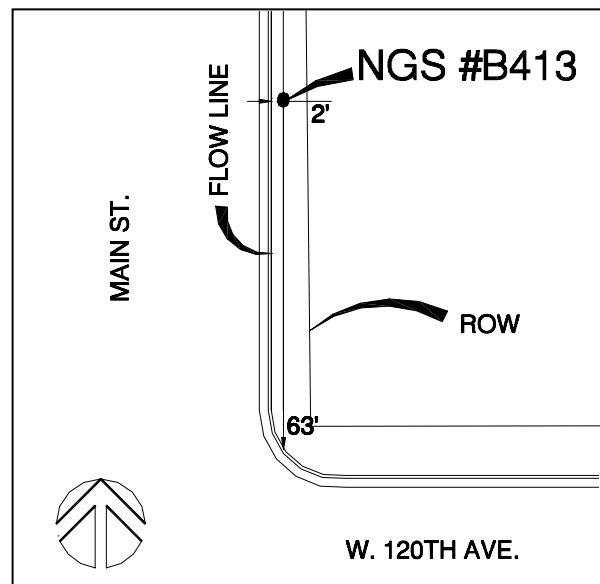
NGS Monument

Horizontal Datum - NAD 83/92 - HARN (High Accuracy Reference Network) Based  
(SPCS) State Plane Coordinate System Colorado North Zone 0501 US Survey Feet

Vertical Datum - Ellipsoid GRS 80 – (Geodetic Reference System of 1980)  
NAVD 88 – (North American Vertical Datum of 1988)

★ NGS Published *Broomfield Surveyed Point*

<b>Position</b>	<b>Latitude</b> 39°54'52.53097" N	<b>Longitude</b> 105°04'18.03779" W
<b>NSPCS</b>	<b>Northing</b> 1212025.190	<b>Easting</b> 3120145.992
<b>Height (Orthometric)</b>	<b>1635.184 Meters</b>	<b>5364.766 (US) Feet (Adjusted)</b>
<b>Scale Factor</b>	<b>0.999973957</b>	



Contact—The City and County of Broomfield, GIS Division,  
One DesCombes Dr., Broomfield, CO 80020, 303-464-5834.

The station is located in The City and County of Broomfield, in the Southwest 1/4 of  
Section 36, T1S, R69W, of the 6<sup>th</sup> Principal Meridian.

The station is at the intersection of U.S. Highway 287 and Main St. in Broomfield.  
The mark is 2.0' east of the east flow line of Main St., 36.0' north of the north flow  
line of U.S. Highway 287. The mark is a NGS Monument with a 5-inch logo cap in  
the ground and access to the stainless steel rod set to the depth of 4.3 meters  
encased in a pipe flush with the ground.