



THE CITY AND COUNTY OF BROOMFIELD SURVEY SHEET
GPS CONTROL POINTS

May 2006

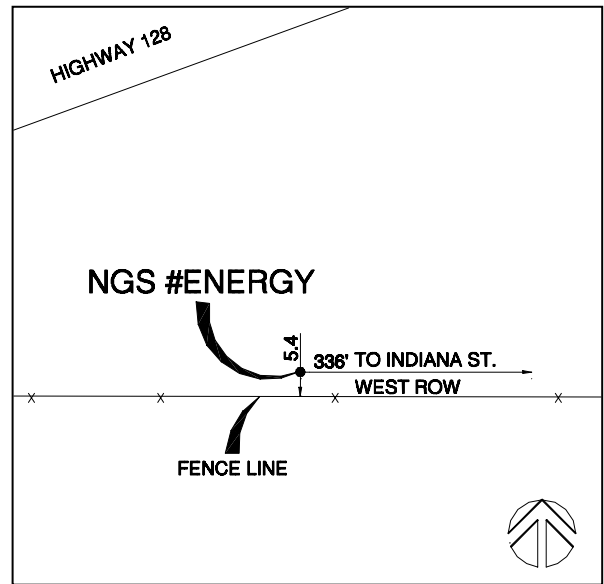
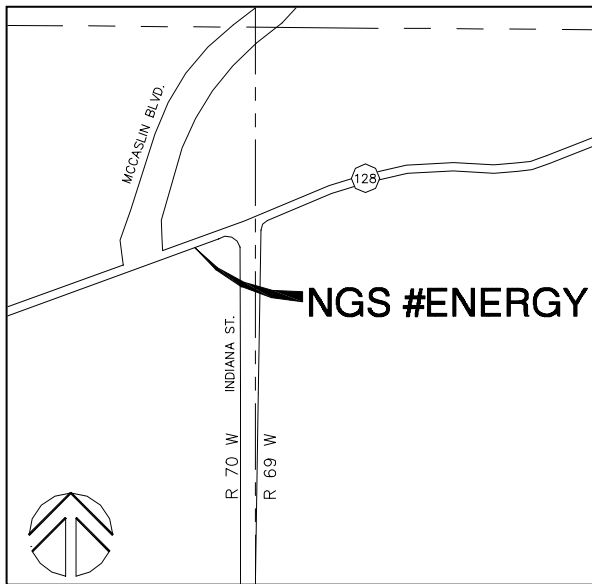
Designation – Energy
State/County – CO/Jefferson
USGS Quad – Louisville (1994)

NGS
SURVEY
CAP

Horizontal Datum - NAD 83/92 - HARN (High Accuracy Reference Network) Based
(SPCS) State Plane Coordinate System Colorado North Zone 0501 US Survey Feet
Ellipsoid GRS 80 – (Geodetic Reference System of 1980)
Vertical Datum - NAVD 88 – (North American Vertical Datum of 1988)

★ NGS Published *KK 1797* <http://www.ngs.noaa.gov/>

Position	Latitude 39°54'35.73345" N	Longitude 105°10'01.20195" W
NSPCS	Northing 1210210.738	Easting 3093413.991
Height (Orthometric)	1785.178 Meters	5856.871 (US) Feet (Adjusted)
Scale Factor	0.999974435	



Contact—The City and County of Broomfield, GIS Division,
One DesCombes Dr. Broomfield, CO 80020, 303-464-5834.

The station is located in the Northeast 1/4 of Section 1, T2S,
R70W, of the 6th Principal Meridian.

To reach the station from the intersection of Highway 128 and
Indiana St., the mark is on the Southwest corner of the
intersection, 5.25' North of fence and is 336' West of Indiana
St. ROW. The mark is a cap in the ground.

