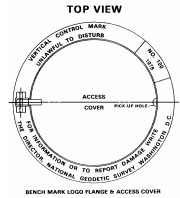




THE CITY AND COUNTY OF BROOMFIELD SURVEY SHEET
GPS CONTROL POINTS

May 2006

Designation – NGS N413
State/County – CO/Boulder
USGS Quad – Lafayette (1994)

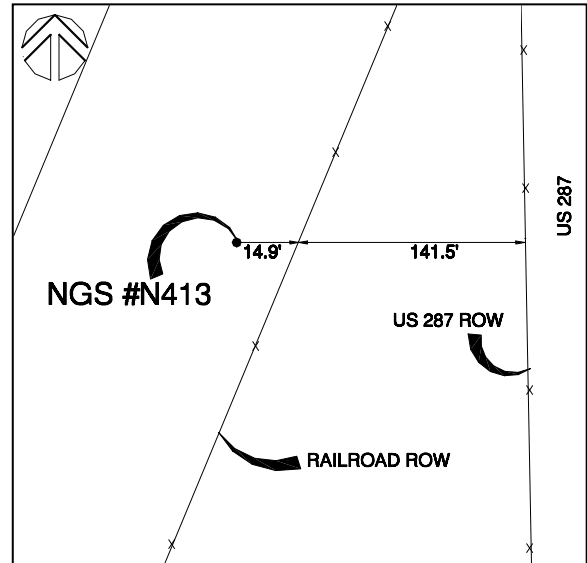
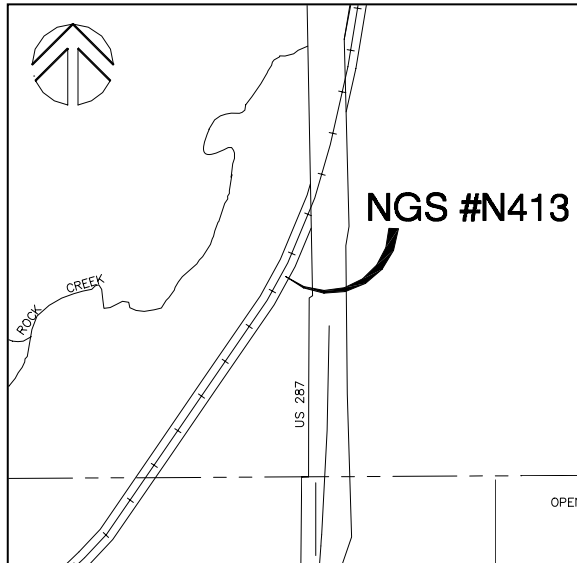


NGS Monument

Horizontal Datum - NAD 83/92 - HARN (High Accuracy Reference Network) Based (SPCS) State Plane Coordinate System Colorado North Zone 0501 US Survey Feet Ellipsoid GRS 80 – (Geodetic Reference System of 1980)
Vertical Datum - NAVD 88 – (North American Vertical Datum of 1988)

★ **NGS Unpublished** *Broomfield Surveyed Point*

Position	Latitude 39°56'51.57803" N	Longitude 105°05'28.16889" W
NSPCS	Northing 1224045.233	Easting 3114626.046
Height (Orthometric)	1604.842 Meters	5265.219 (US) Feet (Adjusted)
Scale Factor	0.999970758	



Contact—The City and County of Broomfield, GIS Division, One DesCombes Dr., Broomfield, CO 80020, 303-464-5834.

The station is located in Boulder County, in the Southeast 1/4 of Section 22, T1S, R69W, if the 6th Principal Meridian.

To reach the station from the intersection of US Highway 287 and Miramonte Blvd. in Broomfield travel North to the intersection of US Highway 287 and the train tracks. The marker is located 14.9' West of railroad ROW fence and 141.5' West of US 287 ROW fence. The mark is a 5-Inch logo cap in the ground, with access to the stainless steel rod set to the depth of 4.9 meters encased in a pipe flush with the ground.

