



THE CITY AND COUNTY OF BROOMFIELD SURVEY SHEET
GPS CONTROL POINTS

May 2006

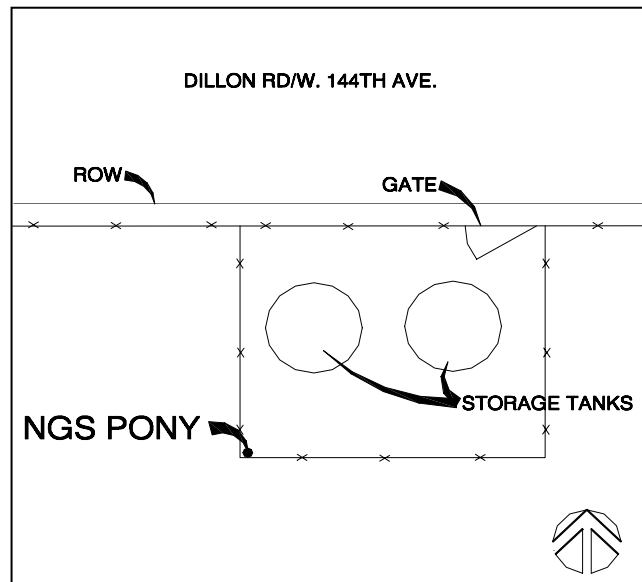
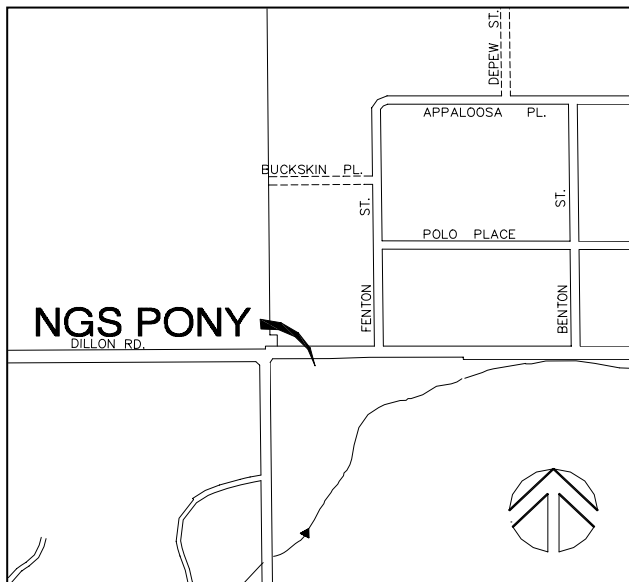
Designation – NGS Pony
State/County – CO/Broomfield
USGS Quad – Lafayette (1994)

NGS
SURVEY
CAP

Horizontal Datum - NAD 83/92 - HARN (High Accuracy Reference Network) Based
(SPCS) State Plane Coordinate System Colorado North Zone 0501 US Survey Feet
Ellipsoid GRS 80 – (Geodetic Reference System of 1980)
Vertical Datum - NAVD 88 – (North American Vertical Datum of 1988)

★ NGS Published PID KK2062 <http://www.ngs.noaa.gov/>

Position	Latitude 39°57'26.73149" N	Longitude 105°03'38.43482" W
NSPCS	Northing 1227643.12484	Easting 3123154.43302
Height (Orthometric)	1654.00 Meters	5426.5 (US) Feet (Adjusted)
Scale Factor	0.999969876	



Contact—The City and County of Broomfield, GIS Division,
One DesCombes Dr., Broomfield, CO 80020, 303-464-5834.

The station is located in The City and County of Broomfield, in the
Northeast 1/4 of Section 24, T1S, R69W, of the 6th Principal
Meridian.

To reach the station from the intersection of S. 124th St. (Aspen St)
and W. 136th Ave. in Broomfield, travel North to the intersection of
S. 124th St. and W. 144th Ave. (Dillon Rd.). Travel East on W. 144th
Ave. The mark is on the South side of W. 144th Ave. near some
storage tanks. The mark is a brass cap set in concrete in the
ground with an orange witness post approximately 1' to the East.

