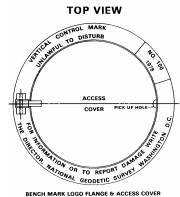




THE CITY AND COUNTY OF BROOMFIELD SURVEY SHEET
GPS CONTROL POINTS

May 2006

Designation – NGS Q413
State/County – CO/Boulder
USGS Quad – Lafayette (1994)



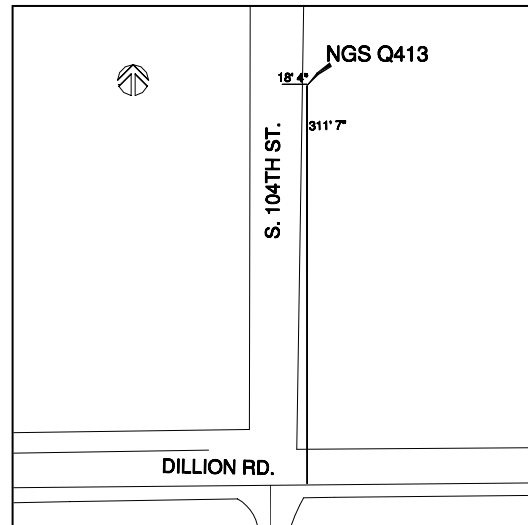
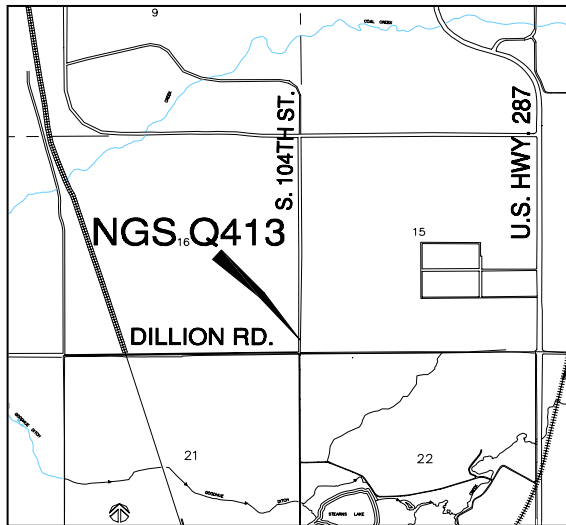
NGS Monument

Horizontal Datum - NAD 83/92 - HARN (High Accuracy Reference Network) Based
(SPCS) State Plane Coordinate System Colorado North Zone 0501 US Survey Feet

Vertical Datum - Ellipsoid GRS 80 – (Geodetic Reference System of 1980)
NAVD 88 – (North American Vertical Datum of 1988)

★ NGS Published KK1556 <http://www.ngs.noaa.gov/>

Position	Latitude 39° 57' 31.53189" N	Longitude 105° 06' 33.29741" W
NSPCS	Northing 1228065.126	Easting 3109536.063
Height (Orthometric)	1614.229 Meters	5296.02 (US) Feet (Adjusted)
Scale Factor	0.99996976	



Contact—The City and County of Broomfield, GIS Division,
One DesCombes Dr., Broomfield, CO 80020, 303-464-5834.

The station is located about 3 miles northwest of Broomfield in the southwest ¼ of section 15, T1S, R69W.

To reach the station from the intersection of U.S. Highway 287 and Dillon Road in Louisville, go west on Dillon Road for 0.95 miles to the intersection of South 104th Street. Turn right, north, for 0.05 miles to the station on the right. The mark is a punch mark, top center on a stainless steel rod driven to refusal, enclosed in a 5 -inch PVC pipe with logo LID, surrounded by a concrete and recessed 2 cm below the ground. It is 311.7 feet north from the centerline of Dillon Road, 18.4 feet east from the center of South 104th Street, and referenced by a witness post in the vicinity.

