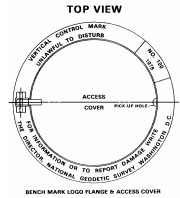




**THE CITY AND COUNTY OF BROOMFIELD SURVEY SHEET  
GPS CONTROL POINTS**

May 2006

**Designation – NGS W411  
State/County – CO/Broomfield  
USGS Quad – Lafayette (1994)**

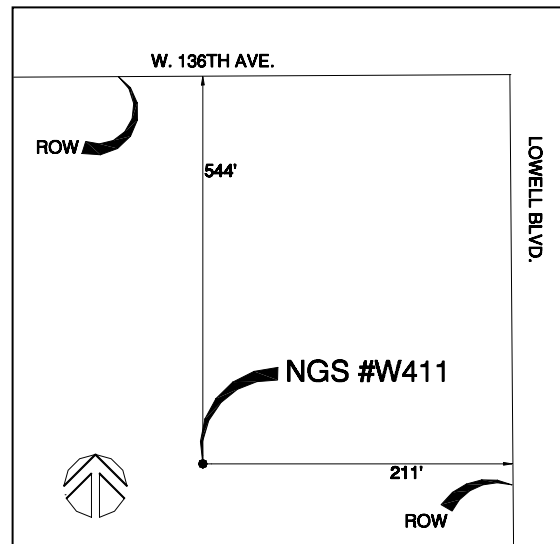
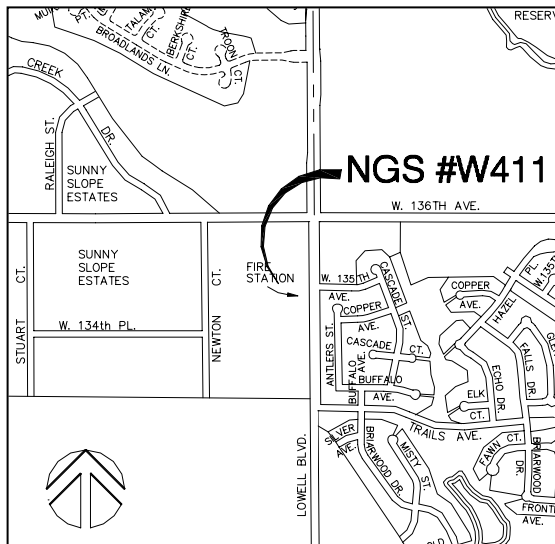


NGS Monument

**Horizontal Datum - NAD 83/92 - HARN (High Accuracy Reference Network) Based (SPCS) State Plane Coordinate System Colorado North Zone 0501 US Survey Feet Ellipsoid GRS 80 – (Geodetic Reference System of 1980)  
Vertical Datum - NAVD 88 – (North American Vertical Datum of 1988)**

**★ NGS Unpublished**      *Broomfield Surveyed Point*

<b>Position</b>	<b>Latitude</b> 39°56'29.96340" N	<b>Longitude</b> 105°02'07.11402" W
<b>NSPCS</b>	<b>Northing</b> 1221935.274	<b>Easting</b> 3130295.504
<b>Height (Orthometric)</b>	<b>1611.762 Meters</b>	<b>5287.923 (US) Feet (Adjusted)</b>
<b>Scale Factor</b>	<b>0.999971314</b>	



**View Southeast to Monument**

Contact—The City and County of Broomfield, GIS Division, One DesCombes Dr., Broomfield, CO 80020, 303-464-5834.

The station is located in The City and County of Broomfield, in the Northeast 1/4 of Section 30, T1S, R68W, of the 6<sup>th</sup> Principal Meridian.

To reach the station from the intersection of Lowell Blvd. and W. 136th Ave. in Broomfield, travel 211 Ft. West of Lowell Blvd. ROW and 544 Ft. South of W. 136th Ave. ROW. The mark is a NGS Monument. The datum point is through a 5-inch logo cap in the ground with access to the stainless steel rod set to the depth of 4.3 meters, encased in a pipe flush with the ground.

