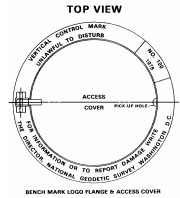




THE CITY AND COUNTY OF BROOMFIELD SURVEY SHEET
GPS CONTROL POINTS

May 2006

Designation – NGS Y411
State/County – CO/Broomfield
USGS Quad – Lafayette (1994)

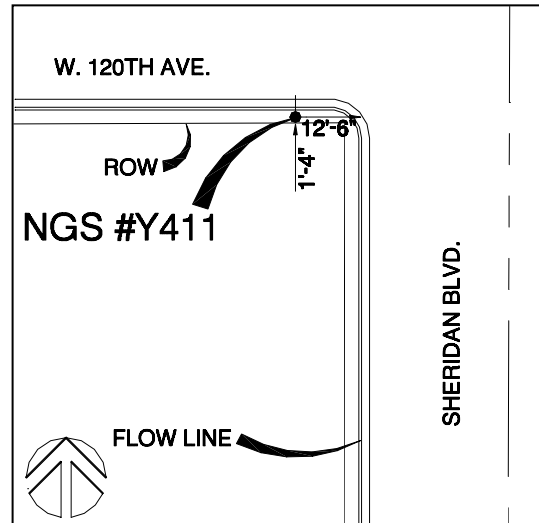
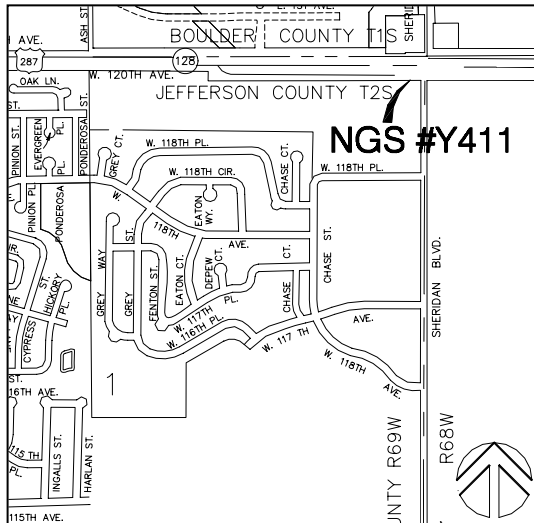


NGS Monument

Horizontal Datum - NAD 83/92 - HARN (High Accuracy Reference Network) Based (SPCS) State Plane Coordinate System Colorado North Zone 0501 US Survey Feet Ellipsoid GRS 80 – (Geodetic Reference System of 1980)
Vertical Datum - NAVD 88 – (North American Vertical Datum of 1988)

★ **NGS Unpublished** *Broomfield Surveyed Point*

Position	Latitude 39°54'49.45757" N	Longitude 105°03'11.22189" W
NSPCS	Northing 1211739.899	Easting 3125353.650
Height (Orthometric)	1610.695 Meters	5284.422 (US) Feet (Adjusted)
Scale Factor	0.999974044	



Contact—The City and County of Broomfield, GIS Division, One DesCombes Dr., Broomfield, CO 80020, 303-464-5834.

The station is located in The City and County of Broomfield, in the Northeast 1/4 of Section 1, T2S, R69W, of the 6th Principal Meridian.

The mark is on the Southwest corner of the intersection of W. 120th Ave and Sheridan Blvd. and is 12.6' from the Sheridan Blvd. flow line and 1.4' from W. 120th Ave. ROW line. The mark is a 5-Inch logo cap in the ground, with access to the stainless steel rod set to the depth of 4.9 meters encased in a pipe. (Located under secondary cover in sidewalk)

