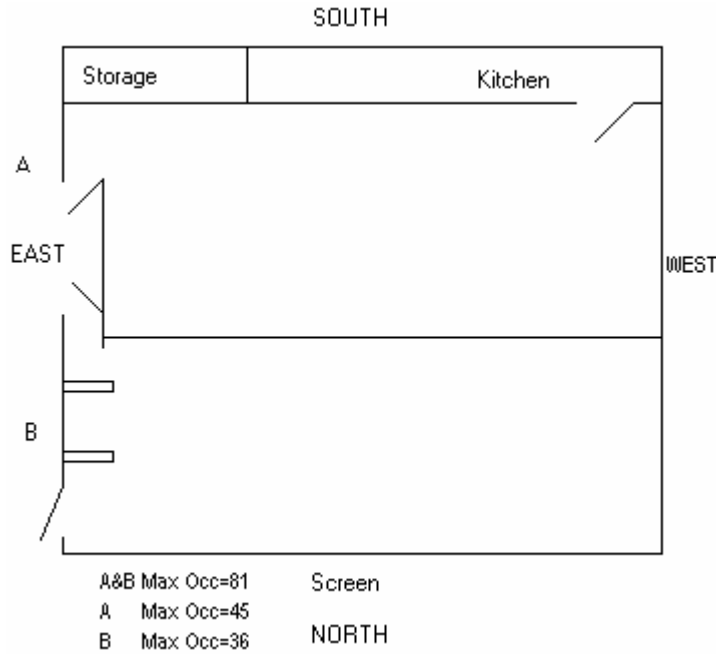


Eisenhower Room Setup

Maximum of 24 Tables Available (Tax Time - 20)

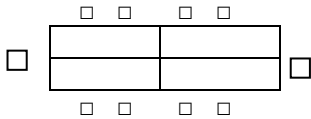
Table measurements (5 ft long; 2 ft wide)

Maximum number of Chairs - 76



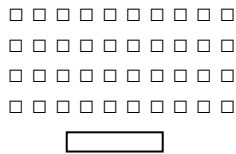
Boardroom Style

A&B Attendance Limit 30
 A or B Attendance Limit 16



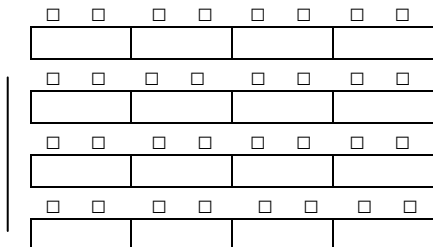
Lecture Style (Max 76)

A Attendance Limit 40
 B Attendance Limit 30



Classroom Style

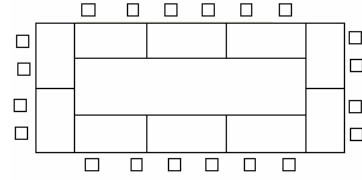
A&B Attendance Limit 48 – (Note: people on the ends)
 A or B Attendance Limit 24 (tight)



Tight Fit Due to Wall

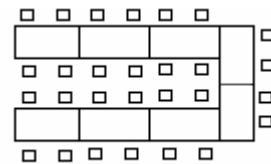
Conference Room Style

A&B Attendance Limit 24
 A Attendance Limit 16
 B Attendance Limit 20



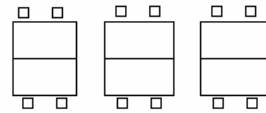
U-Shaped Style

A&B Attendance Limit 20 (outside only) or
 32 (chairs inside U too)
 A Attendance Limit 12
 B Attendance Limit 16



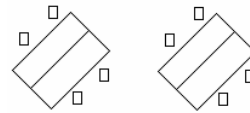
Activity Style 1

Maximum 10 Table Pairs
 Attendance Limit 20 per room



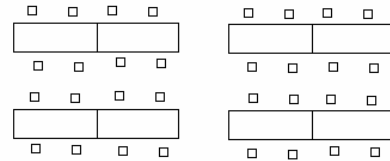
Activity Style 2

Maximum 10 Table Pairs
 Attendance Limit 20 per room



Activity Style 3

A&B Attendance Limit 24
 A or B Attendance Limit 12



Chair HorseShoe Style

A&B Attendance Limit 22 (1 row), 36 (2 rows)
 A Attendance Limit 12

