



EXISTING PARK RESOURCES

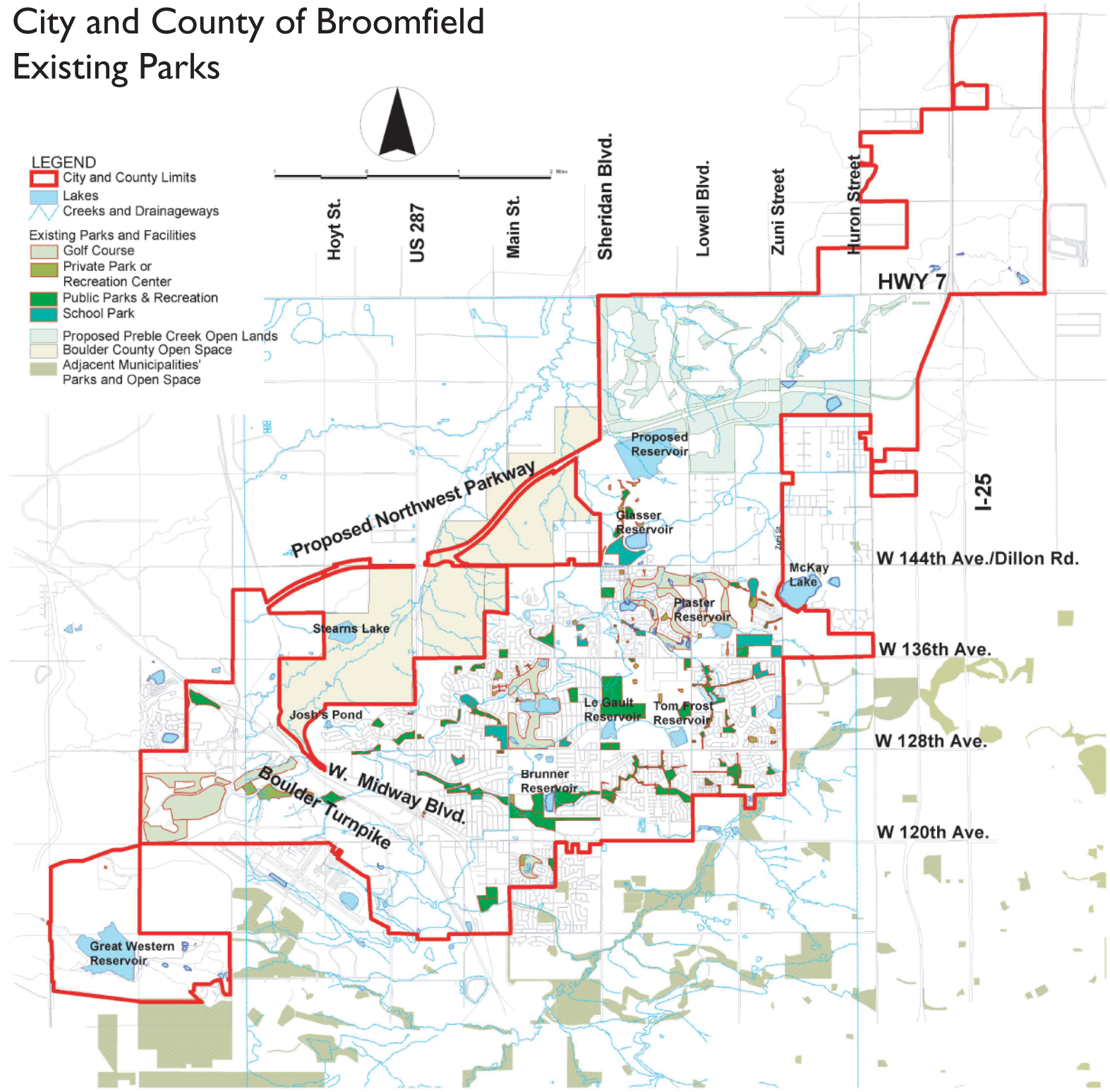
SURVEY RESULTS

- Over 50% have used parks more than 10 times in the past year
- Only 50% feel there are sufficient large parks and soccer fields
- 90% feel that neighborhood parks should be within 15 minutes or 1/4 mile of home
- 80% are very satisfied with maintenance

City and County of Broomfield Existing Parks

LEGEND

- City and County Limits
- Lakes
- Creeks and Drainageways
- Existing Parks and Facilities
 - Golf Course
 - Private Park or Recreation Center
 - Public Parks & Recreation
 - School Park
- Proposed Preble Creek Open Lands
- Boulder County Open Space
- Adjacent Municipalities' Parks and Open Space



PARK ACREAGE

Pocket Parks	67.2 AC
Neighborhood Parks	326.8 AC
Community Parks	62.6 AC
Joint School Parks	153 AC
City/County Parks	81.3 AC
Private Park/Recreation Facility	85.5 AC
Golf Course	657 AC
TOTAL	1,433.4 AC
Current Park Level of Service	16 AC/1,000
Desired Park Level of Service	16 AC/1,000