



EXISTING OPEN SPACE RESOURCES

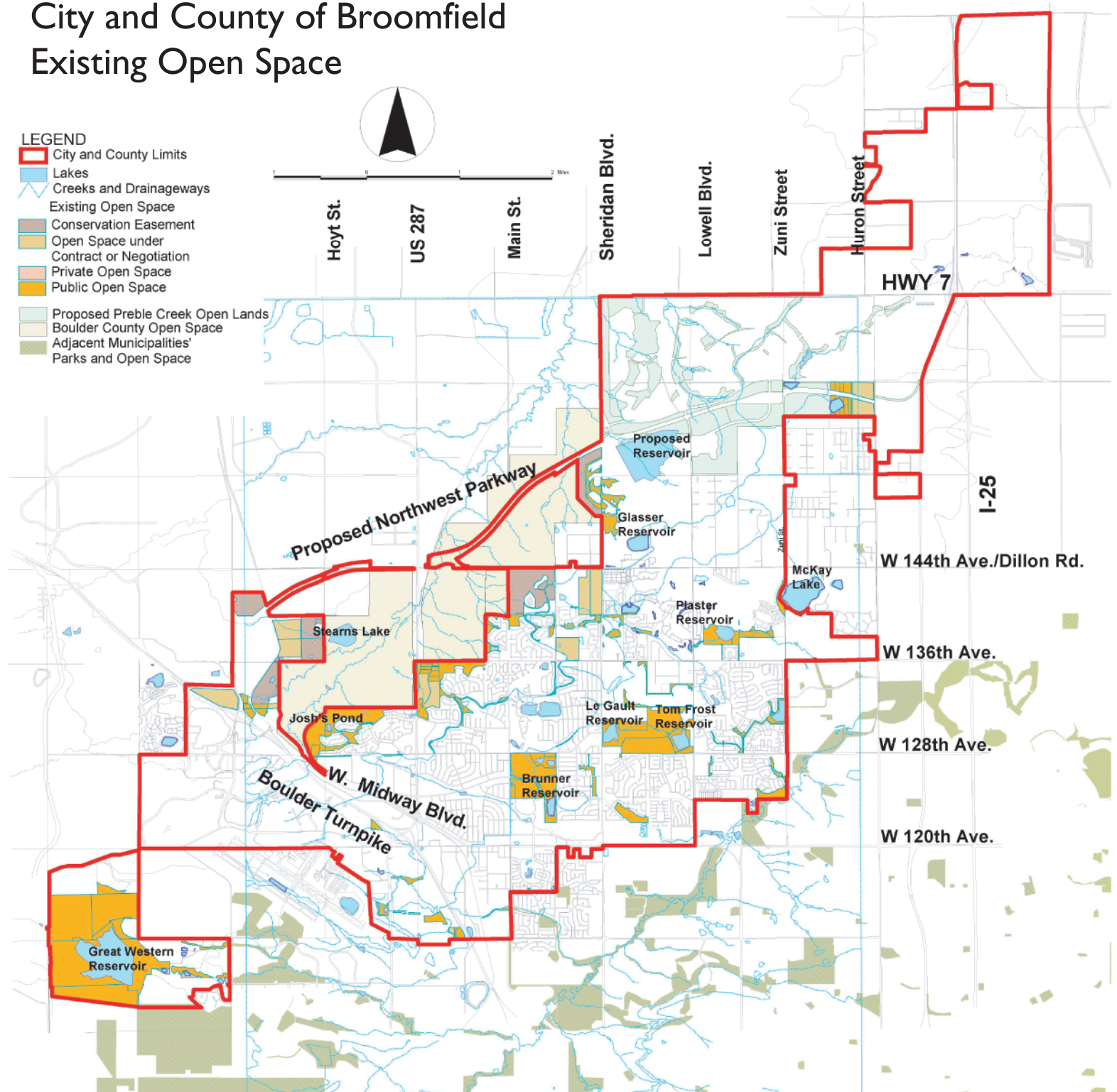
SURVEY RESULTS

- Almost 1/2 feel acquisition of additional open space is the community's #1 priority
- Over 30% have used open space more than 10 times in the past year
- Only 40% feel there is sufficient open space in the community
- Only 35% are satisfied with the protection of critical wildlife habitat
- 62% feel public access to critical wildlife habitat should be limited

City and County of Broomfield Existing Open Space

LEGEND

- City and County Limits
- Lakes
- Creeks and Drainageways
- Existing Open Space
- Conservation Easement
- Open Space under Contract or Negotiation
- Private Open Space
- Public Open Space
- Proposed Preble Creek Open Lands
- Boulder County Open Space
- Adjacent Municipalities' Parks and Open Space



OPEN SPACE ACREAGE

Public Open Space	1,871 AC
Private Open Space	18 AC
Public Open Space under contract or negotiation	208 AC
Conservation Easement	303 AC
Boulder County Open Space	2,500 AC
TOTAL	4,906 AC