



# 2010 Prairie Dog Survey

## Overview of Broomfield's 2009 Black-tailed Prairie Dog Population Survey





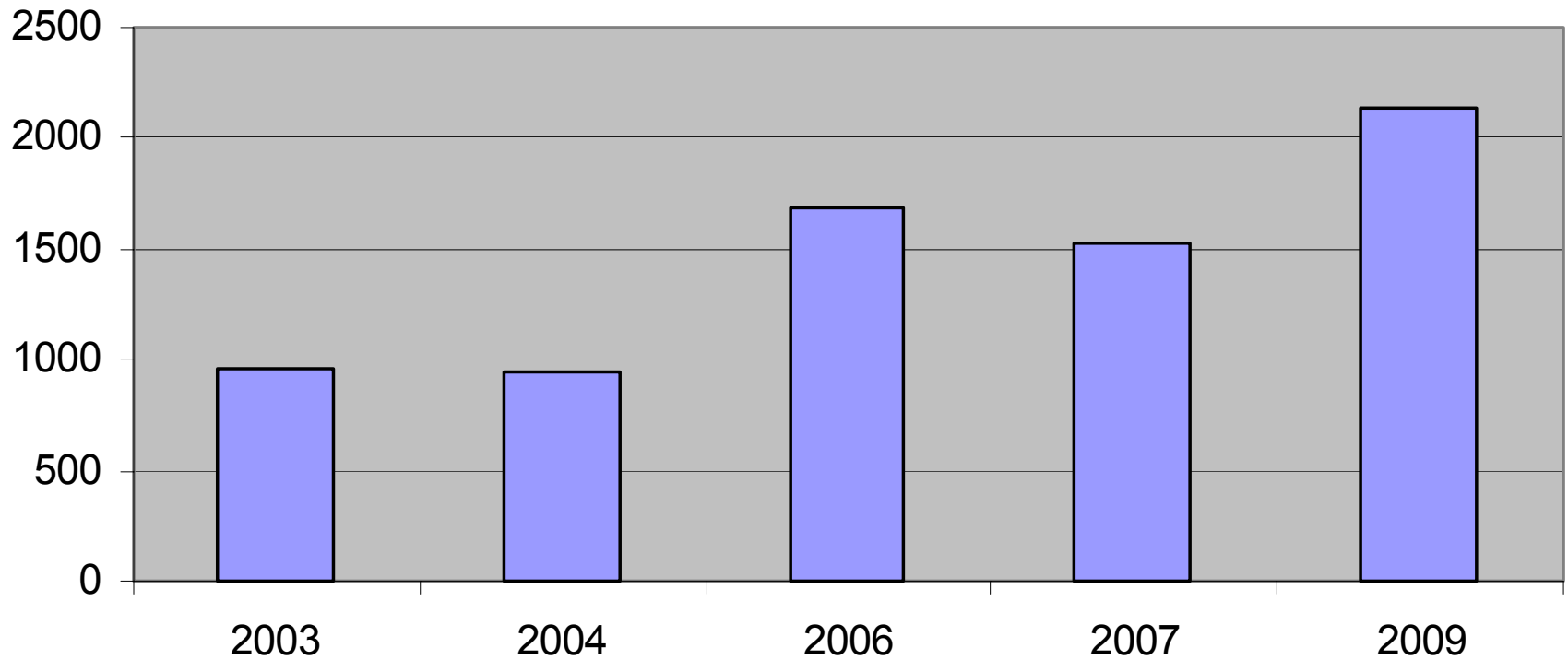
# 2010 Prairie Dog Survey

- **Site surveys were conducted by Walsh Environmental between August 2009 and October 2009.**
- **Surveyors used the same survey protocol as past years to maintain consistency.**
- **Survey included all existing sites from the 2007 survey. Aerial maps were reviewed to include any new sites.**



# 2010 Prairie Dog Survey

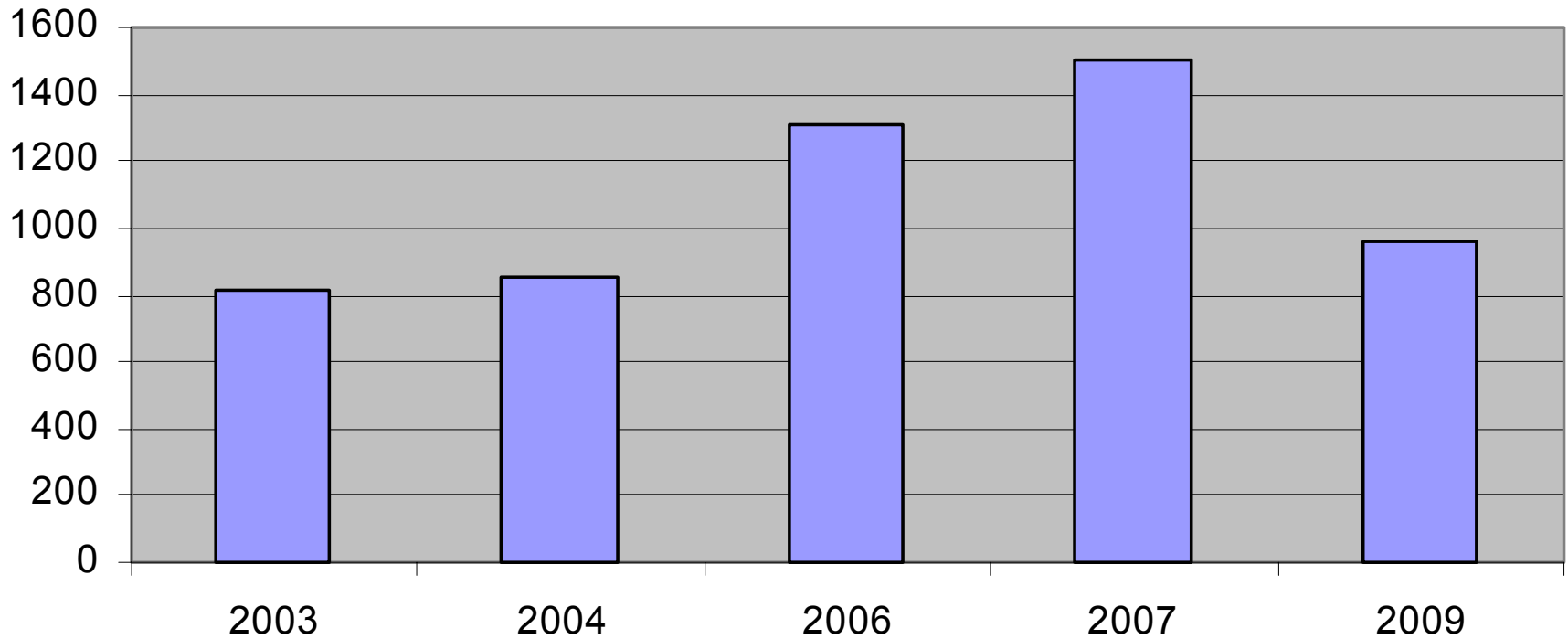
## Prairie Dogs on Private Land





# 2010 Prairie Dog Survey

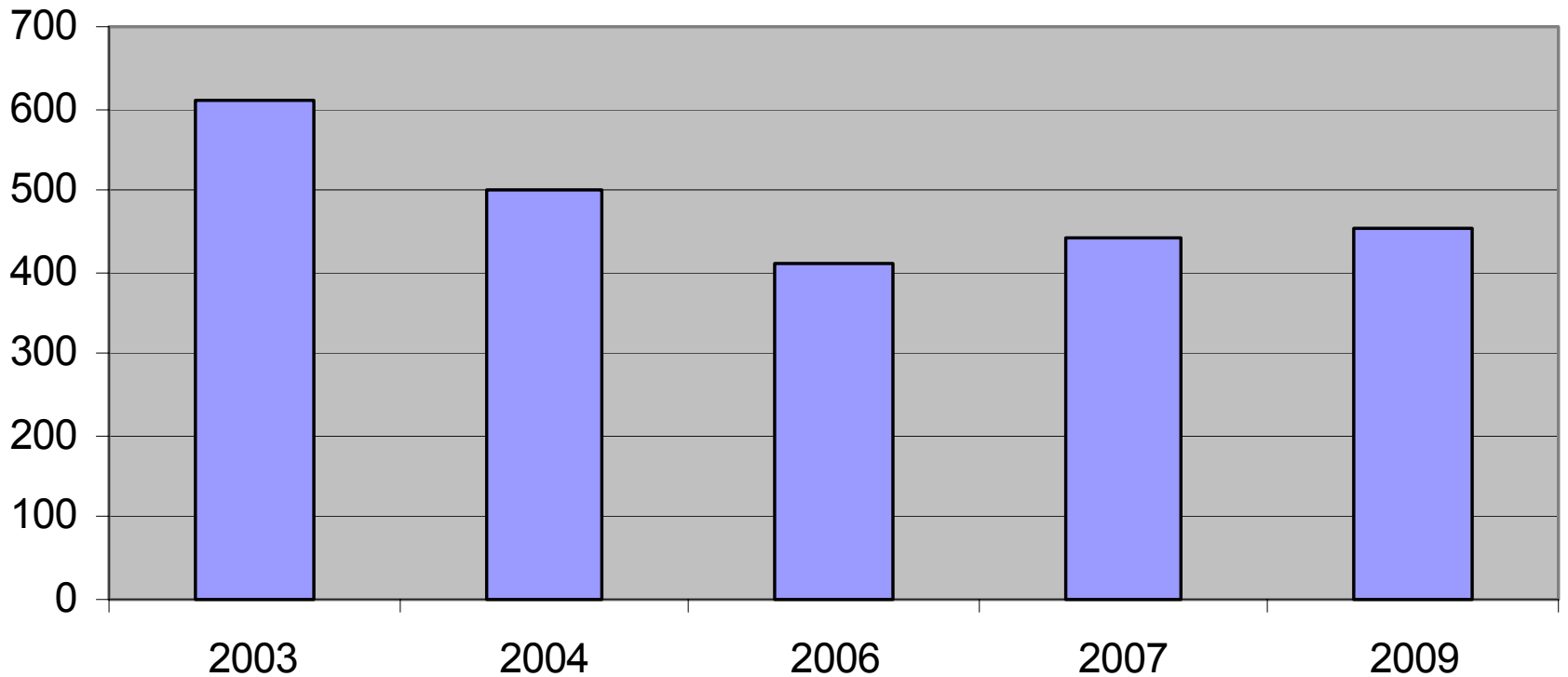
## Prairie Dogs on Public Land





# 2010 Prairie Dog Survey

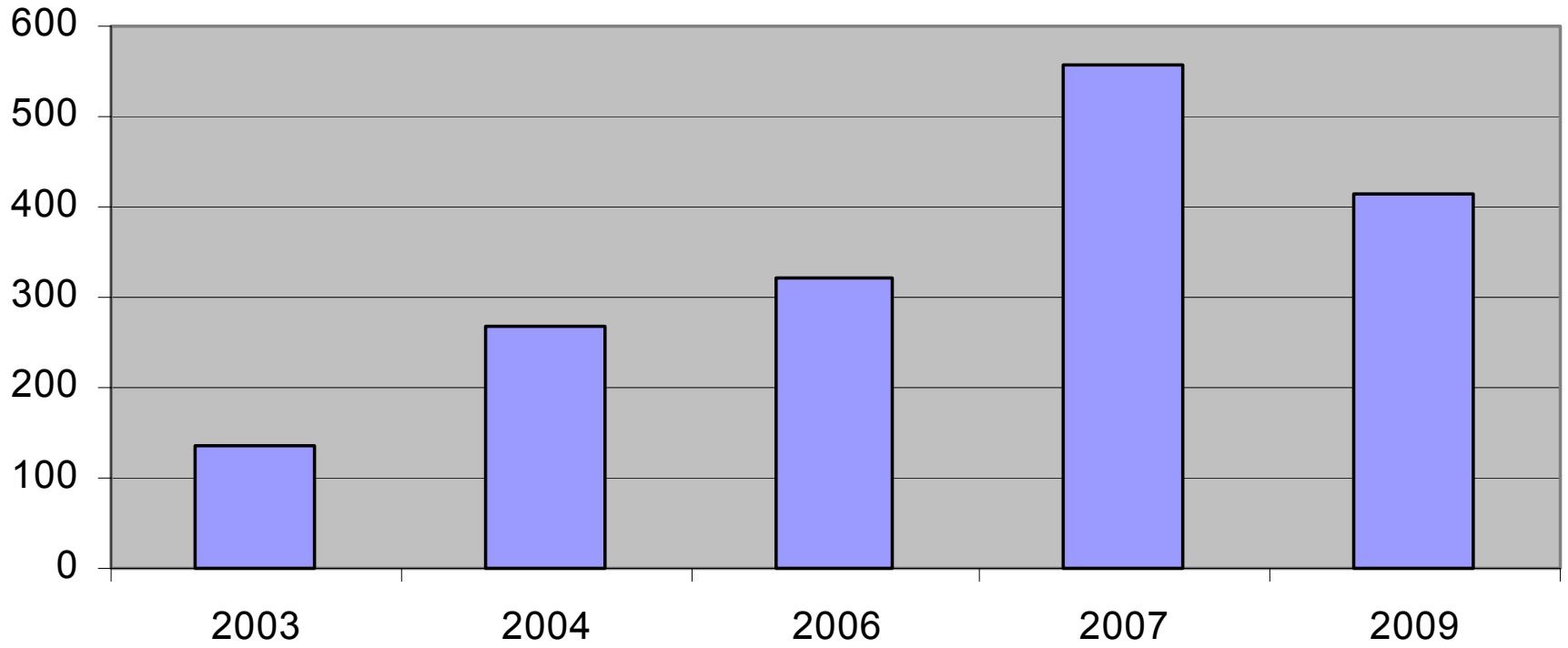
## Acres of Prairie Dogs on Private Land





# 2010 Prairie Dog Survey

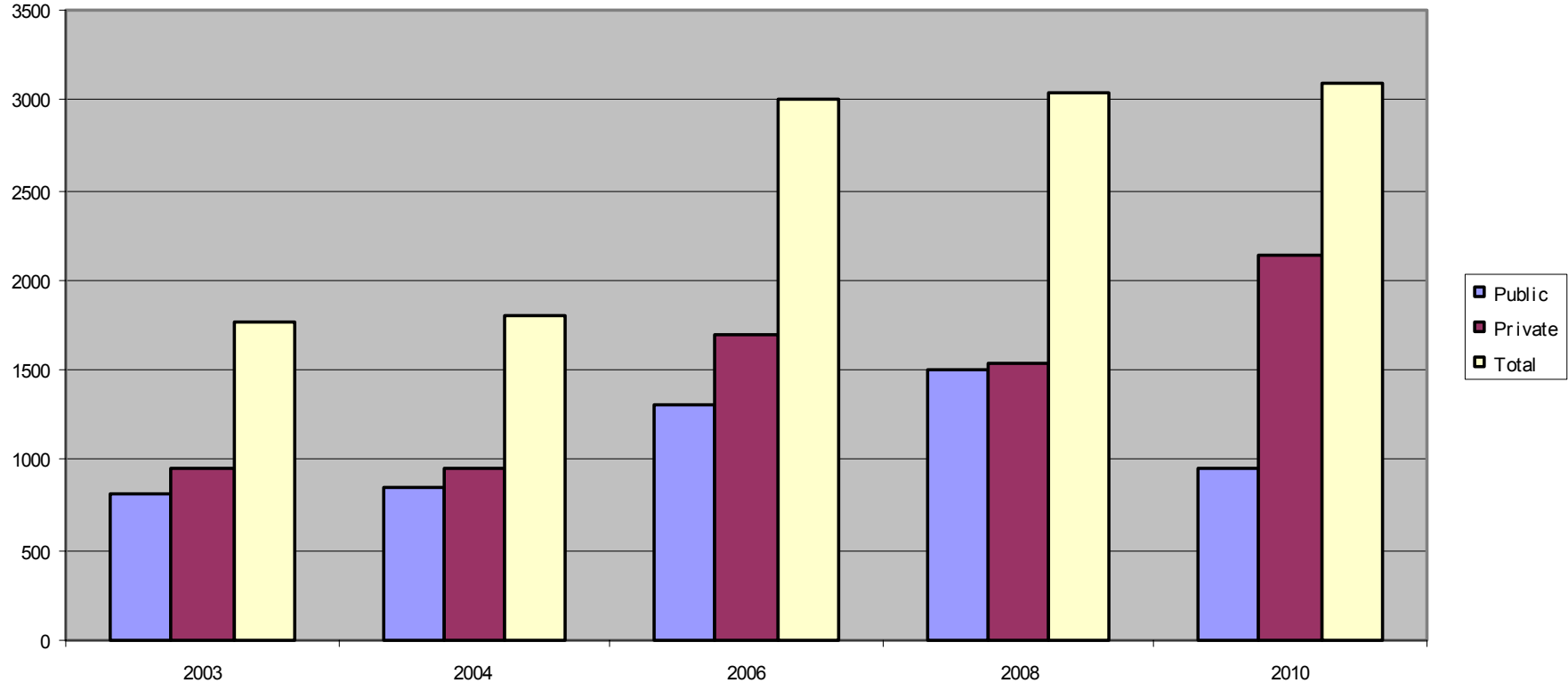
## Arces of Prairie Dogs on Public Land





# 2010 Prairie Dog Survey

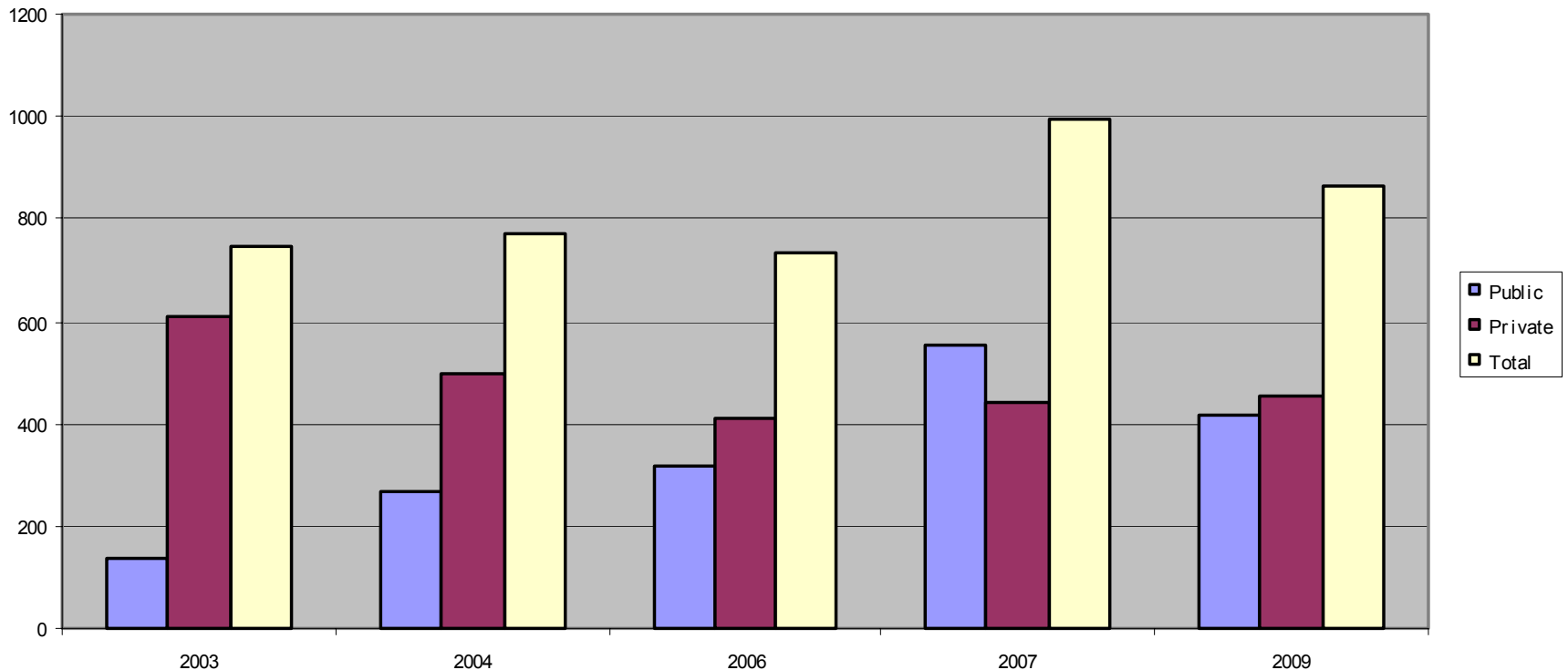
## Broomfield Prairie Dogs - 2009





# 2010 Prairie Dog Survey

## Acres of Prairie Dogs in Broomfield 2009





# 2010 Prairie Dog Survey

## Interpretation and Analysis

- Results show an increase of population on private lands by 39% and a decrease on public lands by 31%.
- Total population shows a slight increase of overall population of 2% and a slight decrease in acreage of 13% compared to 2007.
- Higher density in some areas as population grew without gaining more acreage.
- Significant plague event at Great Western open space had great effect on overall results, as approximately 655 prairie dogs and 125 acres were lost at plague site, which accounts for 43% of the prairie dogs and 23% of the acreage of public land from the 2007 survey.



# 2010 Prairie Dog Survey

## Interpretation and Analysis

- **Without these losses from the Great Western plague event, the total number of prairie dogs on all sites would be projected to have increased in population by 24%, while total acreage would have remained even compared to 2007 results.**
- **The population at Great Western is expected to experience a population rebound post-plague, and future relocation projects and natural expansion of existing prairie dogs can be expected.**
- **Complete survey information, charts, and mapping of the survey will be available on the Open Space website.**