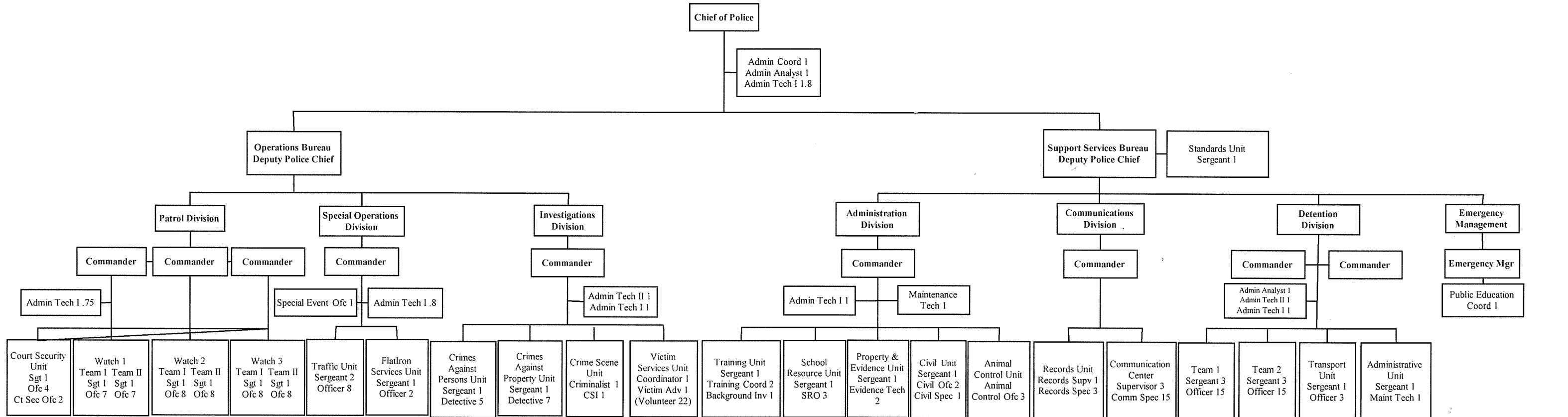




Broomfield Police Department 2012



Patrol Division 62.75
(Sworn 60/Non-Sworn 2.75)

- Emergency Response
- Calls for Service
- Preliminary Investigation
- Neighborhood Problem Solving
- DUI Enforcement
- Bicycle Patrol
- K-9 Officers
- Court Security
- Field Training Program
- S.W.A.T.

Special Operations Division 15.8
(Sworn 15/Non-Sworn .8)

- Traffic Enforcement
- Accident Investigation
- Special Event Response
- FlatIron Business District
- Northwest Parkway Services

Investigations/ NMTF Division 21
(Sworn 15/Non-Sworn 6)

- Persons Crime Investigation
- Property Crime Investigation
- Crime Scene Investigation
- Domestic Violence Investigation
- Drug Investigation
- Family Crime Investigation
- Crime Analysis
- Criminal Intelligence
- Crime Stoppers
- Victim Services

Administration Division 21
(Sworn 10/Non-Sworn 11)

- Recruitment
- Training
- Licensing
- Background Investigations
- School Resources Officers
- Civil Process
- Animal Control
- Property Management
- Honor Guard
- Senior Liaison
- Facility/Equipment Maintenance

Communications Division 23
(Sworn 1/Non-Sworn 22)

- Communications Center
- Police/Fire Communications
- 911 System
- Police Records

Detention Division 48
(Sworn 44/Non-Sworn 4)

- Inmate Housing
- Prisoner Transport
- Facility/Equipment Maintenance

Emergency Management 2
(Sworn 0/Non-Sworn 2)

- City & County Emergency Management
- Public Education & Information

Total Staff: 200.35 FTE
Sworn: 148 FTE
Non-Sworn: 52.35 FTE

01/03/12