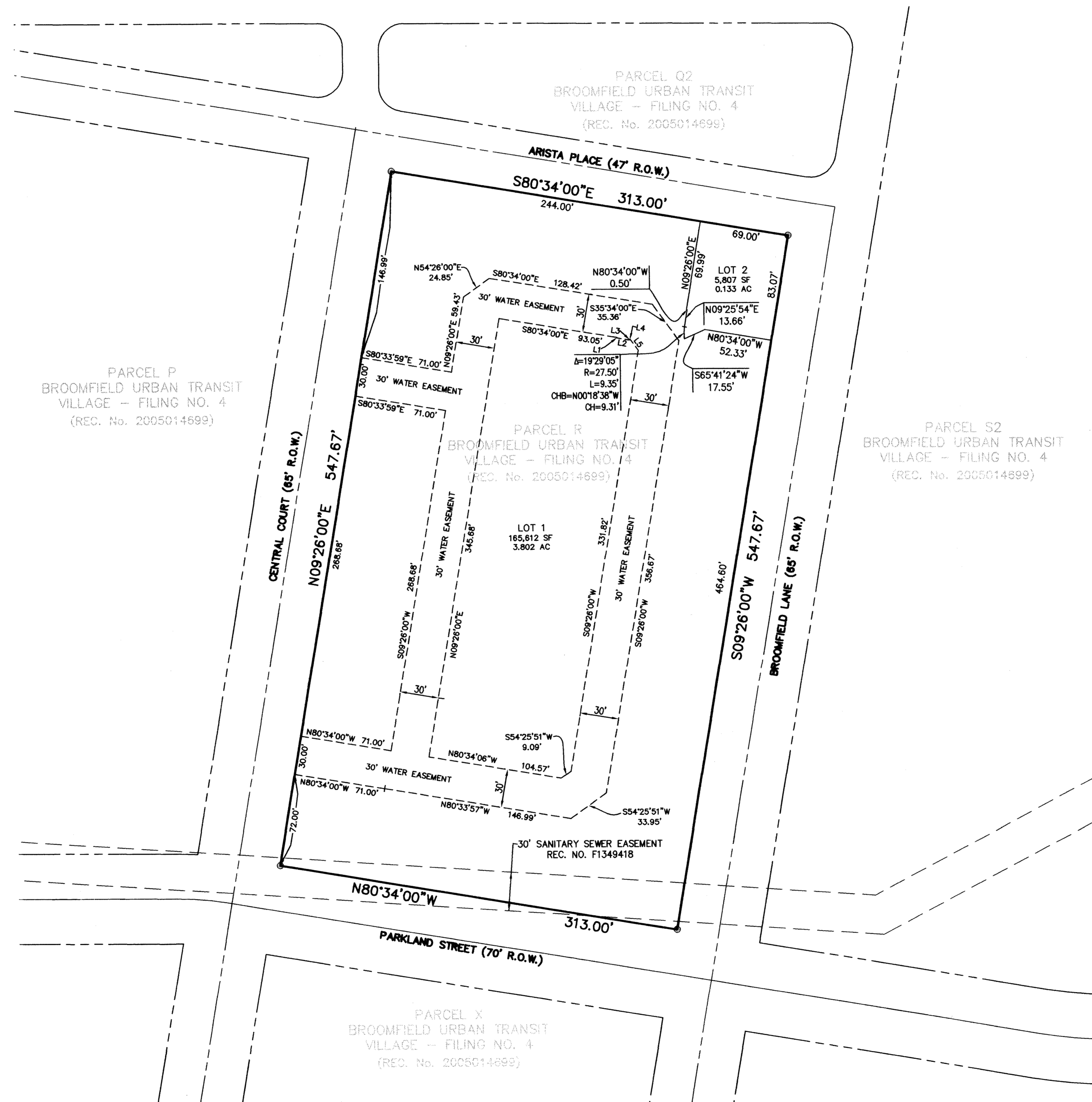


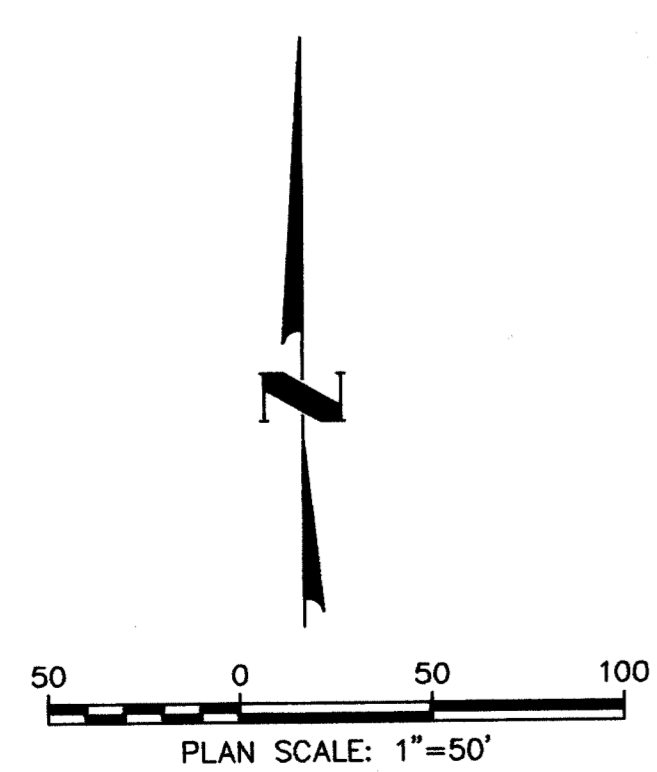
BROOMFIELD URBAN TRANSIT VILLAGE - FILING NO. 12

MINOR SUBDIVISION PLAT
 A MINOR SUBDIVISION, BEING A RE-PLAT OF PARCEL R, BROOMFIELD URBAN
 TRANSIT VILLAGE - FILING NO. 4 (REC. NO. 2005014699)
 SITUATED IN THE SOUTHWEST 1/4 OF SECTION 2, TOWNSHIP 2 SOUTH,
 RANGE 69 WEST OF THE 6TH P.M.
 CITY AND COUNTY OF BROOMFIELD, STATE OF COLORADO.
 SHEET 2 OF 2



EASEMENT LINE TABLE		
LINE	BEARING	DISTANCE
L1	S09°26'00\"W	0.59'
L2	S80°34'00\"E	10.00'
L3	N09°26'00\"E	0.59'
L4	S80°34'00\"E	0.52'
L5	S35°34'00\"E	10.50'

LEGEND:
 ○ SET #5 REBAR WITH YELLOW CAP
 STAMPED: LS 19003



NO CHANGES ARE TO BE MADE TO THIS DRAWING WITHOUT WRITTEN PERMISSION OF HARRIS KOCHER SMITH

PREPARATION DATE: AUGUST 28, 2006
 REVISED: OCTOBER 16, 2006

HARRIS KOCHER SMITH
 engineers • land surveyors
 1391 Speer Blvd. - Suite 390
 Denver, Colorado 80204
 Phone (303) 623-6300
 Fax (303) 623-6311