



THE CITY AND COUNTY OF BROOMFIELD SURVEY SHEET
GPS CONTROL POINTS

May 2006



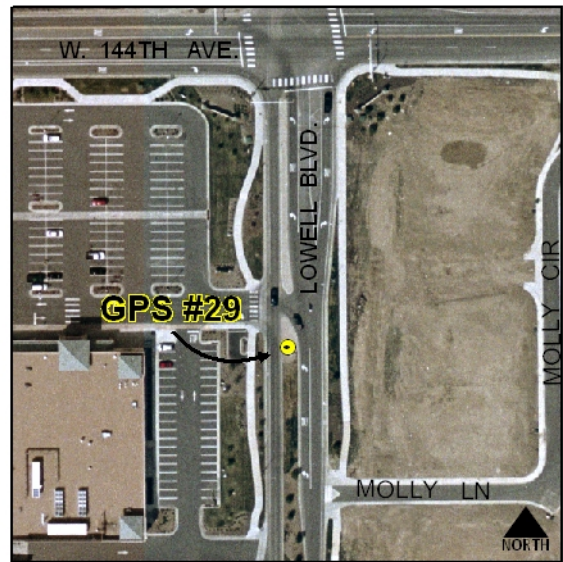
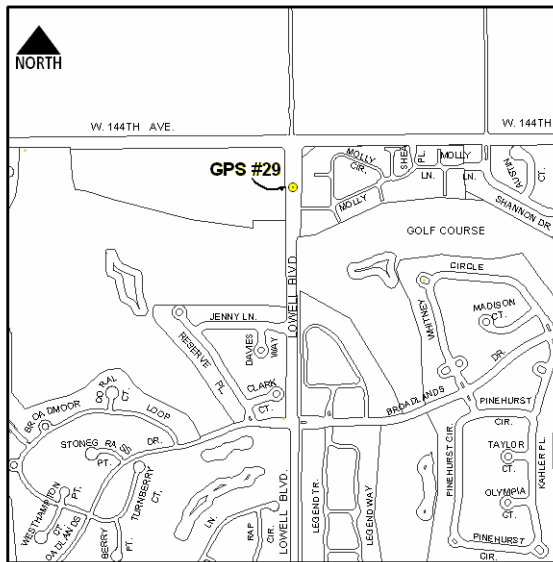
Designation – GPS No. 29
State/County – CO/Broomfield
USGS Quad – Lafayette (1984)

GPS Monument

Horizontal Datum - NAD 83/92 - HARN (High Accuracy Reference Network) Based
(SPCS) State Plane Coordinate System Colorado North Zone 0501 US Survey Feet
Ellipsoid GRS 80 – (Geodetic Reference System of 1980)
Vertical Datum - NAVD 88 – (North American Vertical Datum of 1988)

★ NGS Unpublished *Broomfield Surveyed Point*

Position	Latitude 39°57'24.43429" N	Longitude 105°02'03.92283" W
NSPCS	Northing 1227448.233	Easting 3130515.114
Height (Orthometric)	1616.540 Meters	5303.609 (US) Feet (Adjusted)
Scale Factor	0.999969933	



Contact—The City and County of Broomfield, GIS Division,
One DesCombes Dr., Broomfield, CO 80020, 303-464-5834.

The station is located in The City and County of Broomfield, in the Northeast
1/4 of Section 19, T1S, R68W, of the 6th Principal Meridian.
To reach the station from the intersection of Lowell Blvd. and W. 144th Ave.
in Broomfield, travel South on Lowell Blvd.