

2019 Broomfield Bald Eagle Watch Data Sheet

Site Code	Date	Start Time	End Time	Observer
SL	1/4/2019	12:54pm	2:28pm	MV

Number of adult Bald Eagles detected	2
Number of nestlings detected	0
Number of fledglings detected	0

Wind Code	3	Sky Code	CL	Temp (F)	61	63
Noise Start	n/a	Noise End	n/a			

Behaviors
P- Perched ¹
NI - Nest Incubating
NB - Nest Brooding
NC - Nest Const/Maint.
FS - Feeding Self
FY - Feeding Young
PR - Preening
FL - Fledging
SL - Sleeping
AI - Aggressive Interact.
Fly - to/from Nest/Perch
TE- Territory Flight
NV - Not Visible
C - Courtship/Copulate

Disturbance Indicators	
1	Intent staring
2	Raised hackles
3	Alert posture
4	Distress calls* (three distinctive calls of nesting birds in response to humans) <ul style="list-style-type: none"> a. "chatter call" à 3-4 intro notes w/ short gasps of silence (<1s) followed by rapid sequence of descending notes, usually 6-9 notes (kwit kwit kwit kwit kee-kee-kee-kee) b. "peal" high-pitched, prolonged, gull-like cry, repeated 3-5 times c. "wails" (rare)
5	Flushing
6*	Standing over their eggs (For an extended period > 10 min. notify super; > 20 minutes Stop Work)
7*	Standing on the side of nest (For an extended period > 10 min notify super; > 20 minutes Stop Work)
8	Absence from the nest for an extended period

Any distress call must be investigated to determine cause and **any construction or human activity that may be responsible for the distress call, must be halted or modified immediately.*

ID	Time	3 min. obs.	Behavior	Disturbance		Notes /comments/Loc ²	Wind	
				Type	DI		Spd.	Dir.
A1	1254	1254	P2	n/a	0	A1 perched on tree	9.04	SE
A1		1257	P2	constr	0	AI perched; beeping starts on site		
A1		1300	P2	constr	0	No Change		
A1		1303	P2	constr	0	No Change		
A1		1306	P2	constr	0	No Change		
A1/A2		1309	P2/Fly	constr	0	A2 arrives; flies to nest then so. w/o stopping		
A1		1312	P2	constr	0	A1 perched on tree		
A1		1315	P2	constr	0	quiet at site		
A1		1318	P2	constr	0	cement truck starts up - A1 remains calm		
A1		1321	P2	constr	0	backhoe starts up; A1 remains calm		
A1		1324	P2	constr	0	hammering starts in Zone A		
A1	1326	.	P2	constr	0	A1 repositions to face towards construction; remains calm		
A1		1327	P2	constr	0	No Change		
A1		1330	P2	constr	0	A1 returns to face east away from construction		
A1	1332	.	PR	constr	0	A1 preening		
A1		1333	P2	constr	0	hammering continues - no eagle reaction		
A1		1336	P2	constr	0	N. harrier circles adjacent to tree in surrounding field		
A1		1339	P2	constr	0	A1 perched on tree		
A1		1342	P2	constr	0	No Change		
A1		1345	P2	constr	0	No Change		

² Perch type = 1. On nest; 2. In nest tree (outside of nest); 3. < 50 m. outside of nest tree; 4. >50m from nest;

* Applies to incubation and brooding periods - once chicks hatch standing in or on the side of the nest is normal

2019 Broomfield Bald Eagle Watch Data Sheet

Sky Codes	
CL	Clear
PC	Partly Cloudy
OC	Overcast
DR	Drizzle
RA	Rain
SN	Snow
SL	Sleet/hail
FH	Fog/Haze

Wind Codes	Speed (mph)	Description
0	0	Smoke rises vertically
1	1-3	Wind direction visible in smoke
2	4-7	Wind felt on face, leaves rustle
3	8-12	Leaves and smaller twigs in constant motion
4	13-18	Small branches sway
5	19-24	Smaller trees sway
6	25-31	Large branches in motion
6+	31+	Whole trees in motion

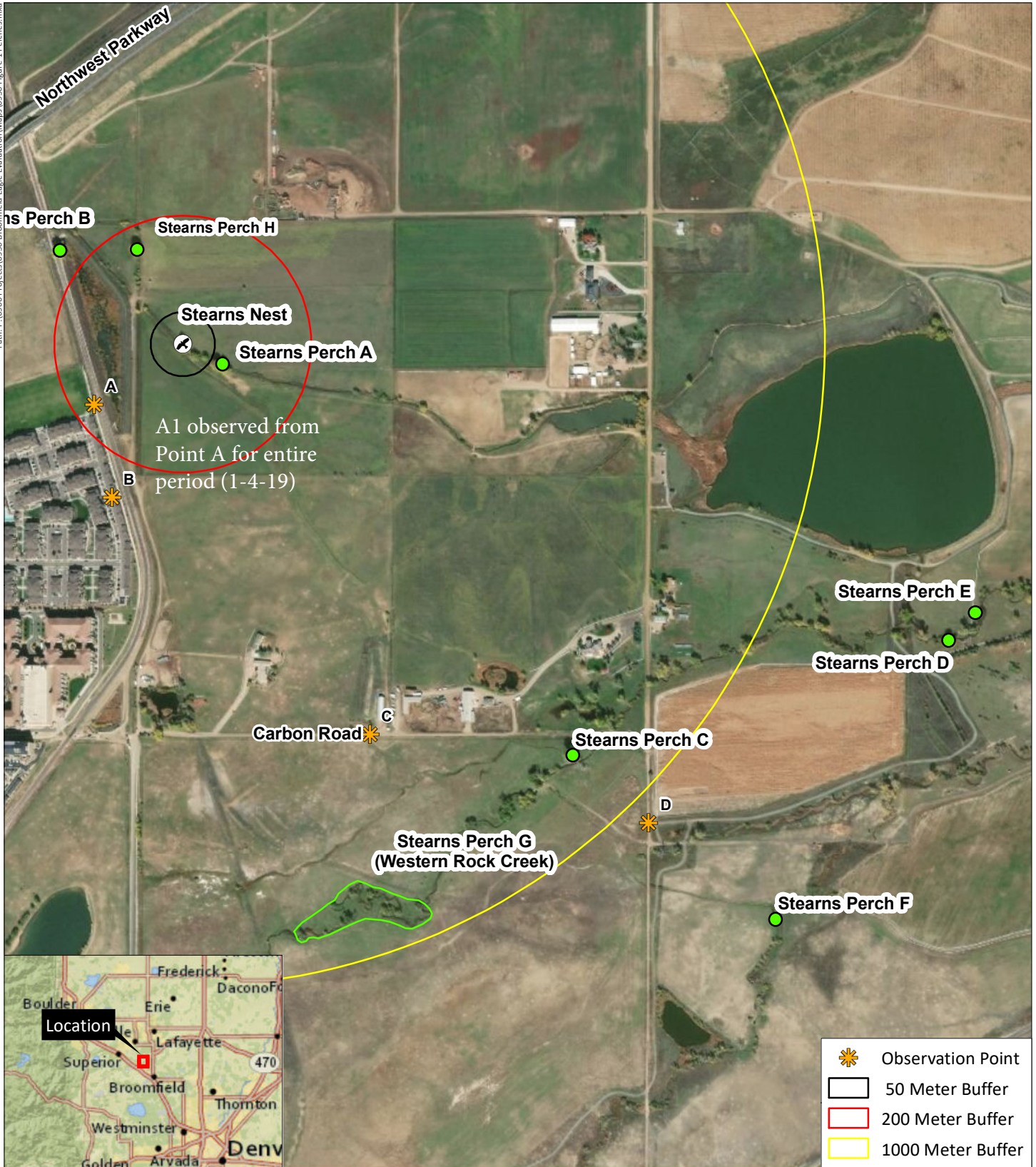
Plumage
Y - Young
JU - Juvenile
SU- Sub Adult
AD- Adult

Please include additional notes and comments below:

One adult eagle (A1) was observed perched in the nest tree for the entire observation period; A2 flew in briefly early on and never landed - continued on to south; A1 appeared calm for the period. Construction picks up after 1300 with cement truck, backhoe and framing - eagle remains calm.

Eagle ID Examples
A1 - Adult 1
A2 - Adult 2
Y1 - First Eaglet
Y2 - Second Eaglet
Y3- Third Eaglet

Photo (s)



Broomfield Eagle Evaluation

Image Source: DigitalGlobe© October 10, 2017

Sections 21,22, 27, and 28, T1S, R69W; 6th PM
 UTM NAD 83: Zone 13N; xxxxxxmE, xxxxxxmN
 Longitude xxx.xxxxx°W, Latitude xx.xxxxx°N
 USGS Lafayette, CO Quadrangle
 City and County of Broomfield and Boulder County, Colorado

Figure 1
Observation Points and
Common Perch Locations

Prepared for: City of Broomfield
 Open Space and Trails
 File: 6950 Figure 1 Perches.mxd (WH)
 January 4, 2019





Broomfield Eagle Evaluation



-  Nest Location
-  Disturbance Zone Boundary

Image Source: DigitalGlobe© October 10, 2017

0 200 400
 Feet



Figure 2
Title

Prepared for: City of Broomfield
 Open Space and Trails
 File: 6950 Figure 2.mxd (WH)
 November 13, 2018

