

2019 Broomfield Bald Eagle Watch Data Sheet

Site Code	Date	Start Time	End Time	Observer	Observation Pt.	Sky Code
SL	5/24/2019	9:25 AM	11:25 AM	MV	A	CL
Noise	Start	56.7	End	55	Temp (F)	61 66

Number of adult Bald Eagles detected	2
Number of nestlings detected	2
Number of fledglings detected	0

Behaviors ^A
P- Perched ¹ (A)
NI - Nest Incubating (L)
NB - Nest Brooding (1)
NC - Nest Const/Maint. (D)
FS - Feeding Self (C)
FY - Feeding Young (M)
PR - Preening (B)
BR - Branching
FL - Fledging
SL - Sleeping (E)
AI - Aggressive Interact. (F)
Fly - to/from Nest/Perch (7)
TE- Territory Flight (8)
NV - Not Visible (9)
C - Courtship (G)
Cop - Copulate (H)

Disturbance Indicators (DI)	
1	Staring Intently
2	Raised hackles
3	Alert posture
4	Distress calls ² (three distinctive calls of nesting birds in response to humans) <ul style="list-style-type: none"> a. "chatter call" à 3-4 intro notes w/ short gasps of silence (<1s) followed by rapid sequence of descending notes, usually 6-9 notes (kwit kwit kwit kwit kee-kee-kee-kee) b. "peal" high-pitched, prolonged, gull-like cry, repeated 3-5 times c. "wails" (rare)
5	Flushing
6*	Standing over their eggs (For an extended period > 10 min. notify super; > 20 minutes Stop Work)
7*	Standing on the side of nest (For an extended period > 10 min notify super; > 20 minutes Stop Work)
8*	Absence from the nest for an extended period
9	Direct flight toward construction, particularly if vocalizing while flying
10	Vocalization during flight in the vicinity of construction

². Any distress call must be investigated to determine cause and **any construction or human activity that may be responsible for the distress call, must be halted or modified immediately.**

*. Applies to incubation /brooding periods - once chicks hatch standing in or on the side of the nest is normal. Absence from nest also common

^A. The alpha-numeric codes in parenthesis correspond to FRNBES behavior codes

Please include additional notes and comments below:

All 4 eagles were present during the survey; construction included hammering and nail guns, mostly in area closest to highway (west);
 Eagles did not appear disturbed by construction activities; adults were seen hunting a bird and managed to kill a bird in mid-air;
 Both young were observed stretching their wings quite a bit but no attempts at leaving the nest.

Plumage
Y - Young
JU - Juvenile
SU- Sub Adult
AD- Adult

Eagle ID Examples
A1 - Adult 1
A2 - Adult 2
Y1 - First Eaglet
Y2 - Second Eaglet
Y3- Third Eaglet

Sky Codes	
CL	Clear
PC	Partly Cloudy
OC	Overcast
DR	Drizzle
RA	Rain
SN	Snow
SL	Sleet/hail
FH	Fog/Haze

Wind Codes	Speed (mph)	Description
0	0	Smoke rises vertically
1	1-3	Wind direction visible in smoke
2	4-7	Wind felt on face, leaves rustle
3	8-12	Leaves and smaller twigs in constant motion
4	13-18	Small branches sway
5	19-24	Smaller trees sway
6	25-31	Large branches in motion
6+	31+	Whole trees in motion

Used as a back-up to anemometer

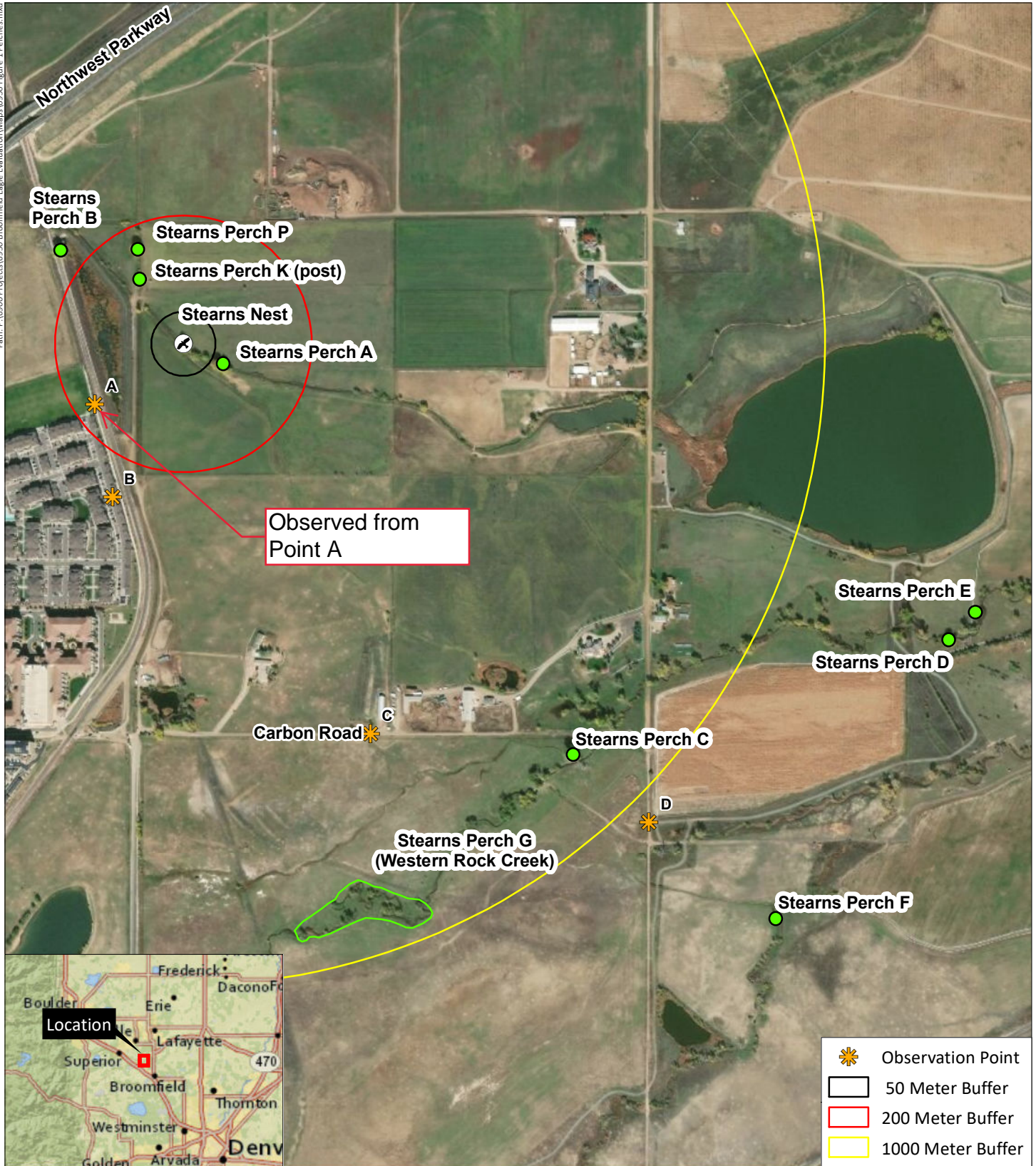
Photo (s)

Need to upload photos from phone

Time (Continuous)	3 min. obs.	Behavior					Disturbance ³		Notes /comments/Loc ²	Wind	
		A1	A2	Y1	Y2	Y3	Type	DI		Spd.	Dir.
	9:25	P1	NV	P1	P1		Construction	0	A1 perched on side of nest with two young laying low	10.67	E
	9:28	P1	NV	P1	P1		Construction	0			
	9:31	P1	NV	P1	P1		Construction	0			
	9:34	P1	NV	P1	P1		Construction	0			
9:37	9:37	P2	NV	P1	P1		Construction	0	A1 moves up to top branch to perch		
	9:40	P2	NV	P1	P1		Construction	0			
	9:43	P2	NV	P1	P1		Construction	0			
9:46	9:46	P2/Call	FY	P1	P1		Construction	0	A2 arrives with food to the nest; A1 calls when A2 arrives		
	9:49	P2	FY	P1	P1		Construction	0			
9:50		Fly	Fly	P1	P1		Construction	0	both adults move east and one grabs songbird/both		
	9:52	P3	P3	P1	P1		Construction	0	eating on fence post		
	9:55	P3	P3	P1	P1		Construction	0	no change	15.04	W
	9:58	P3	P3	P1	P1		Construction	0	no change		
9:59		P3	P3	P1	P1		Construction	0	no change		
	10:01	P3	P3	P1	P1		Construction	0	no change		
	10:04	P3	P3	P1	P1		Construction	0	no change		
10:06		P3	P3	P1	P1		Construction	0	no change		
10:07	10:07	P3	Fly	P1	P1		Construction	0	A2 takes off from fence out of view		
10:10	10:10	P3	P2	P1	P1		Construction	0	A2 returns to nest tree to perch		
	10:13	P3	P2	P1	P1		Construction	0	no change		
	10:16	P3	P2	P1	P1		Construction	0	no change		
	10:19	P3	P2	P1	P1		Construction	0	no change		
	10:22	P3	P2	P1	P1		Construction	0	no change		
10:25	10:25	Fly	P2	P1	P1		Construction	0	A1 flies east out of view	9.8	S
10:28	10:28	NV	P2	P1	P1		Construction	0	no change		
	10:31	NV	P2	P1	P1		Construction	0	no change		
	10:34	NV	P2	P1	P1		Construction	0	no change		
	10:37	NV	P2	P1	P1		Construction	0	no change		
10:40	10:40	NV	P2	P1	P1		Construction	0	no change		

¹. Perch type = 1. On nest; 2. In nest tree (outside of nest); 3. < 50 m. outside of nest tree; 4. >51-200 m from nest; 5. 201-1000 m. from nest; 6. >1k from nest. mark locations on

³. Mark disturbance on BBC property on attached map (Figure 2)



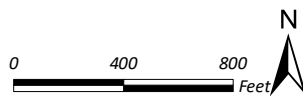
Broomfield Eagle Evaluation

Sections 21,22, 27, and 28, T1S, R69W; 6th PM
 UTM NAD 83: Zone 13N; xxxxxxmE, xxxxxxmN
 Longitude xxx.xxxxx°W, Latitude xx.xxxxx°N
 USGS Lafayette, CO Quadrangle
 City and County of Broomfield and Boulder County, Colorado

Image Source: DigitalGlobe© October 10, 2017

Figure 1
Observation Points and
Common Perch Locations

Prepared for: City of Broomfield
 Open Space and Trails
 File: 6950 Figure 1 Perches.mxd (WH)
 January 16, 2019





Finishing up buildings here

Activity increasing here in zone A - framing

Broomfield Eagle Evaluation



-  Nest Location
-  Disturbance Zone Boundary

Image Source: DigitalGlobe© October 10, 2017

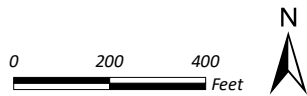


Figure 2
Title

Prepared for: City of Broomfield
Open Space and Trails
File: 6950 Figure 2.mxd (WH)
November 13, 2018

