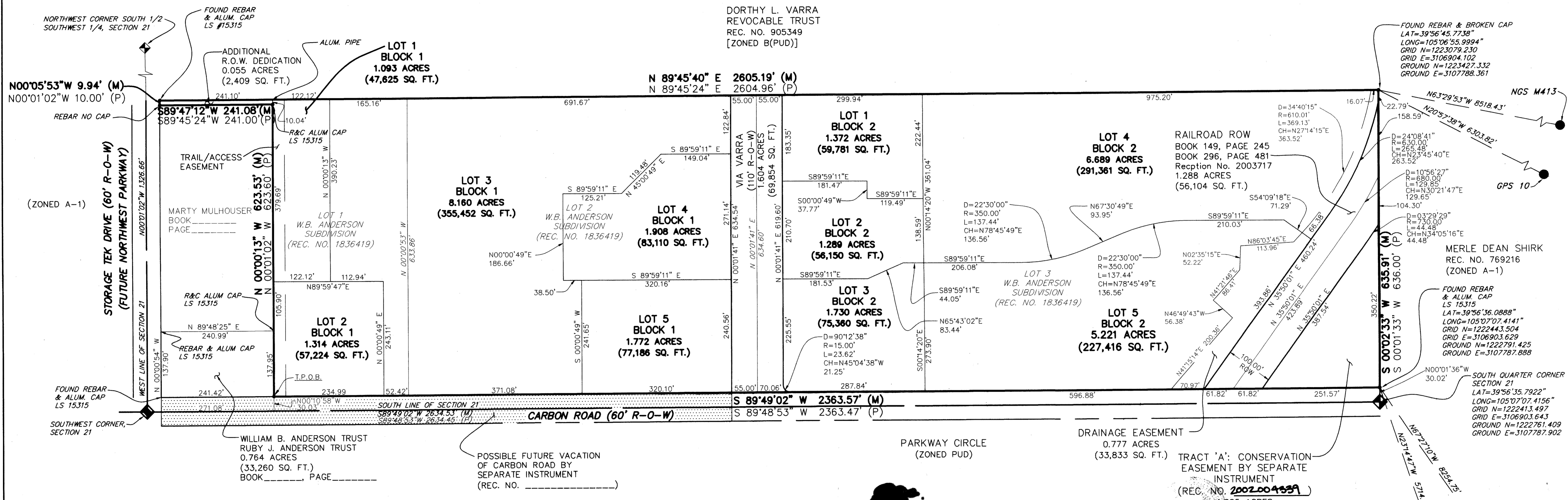


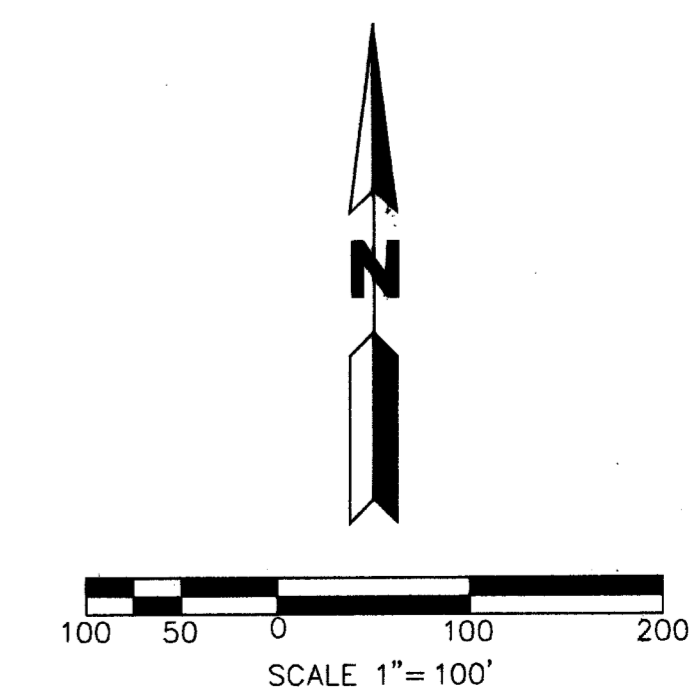
THE OVERLOOK DISTRICT - FILING NO. 1

A REPLAT OF A PORTION OF LOT 1 AND A REPLAT OF LOTS 2 AND 3, W.B. ANDERSON SUBDIVISION, RECEPTION NO. 1836419

LOCATED IN THE SOUTHWEST QUARTER, SECTION 21, TOWNSHIP 1 SOUTH,
RANGE 69 WEST OF THE 6TH PRINCIPAL MERIDIAN.
CITY OF BROOMFIELD, COUNTY OF BOULDER, COLORADO
SHEET 2 OF 2



NOTE: MODIFICATION FOR USED TO
REDUCE TO GROUND MODIFIED STATE
PLANE GRID COORDINATES 0:99971547



MARTIN/MARTIN
Consulting Engineers
4251 Kipling St.
Wheat Ridge, CO
(303) 431-6100
email: civ@martinmartin.com

REV. 08-10-01
REV. 07-30-01
REV. 07-16-01
REV. 07-12-01
REV. 06-20-01
REV. 06-08-01
REV. 04-19-01
REV. 04-17-01
REV. 03-27-01
REV. 02-22-01
REV. 10-28-00
AUG. 25, 2000

C:\THOMAS\broom-s\plat1
 project manager JCM
 project designed by JCC
 job no. NWL
 sheet no.
 plot date 07-30-01
 plot space PLAN
 main file PLAT.dwg
 xreference